

ALTV2416UL3 Series

CCTV Power Supplies with Factory installed 3-wire line cord

Models Include:

ALTV2416ULX3

- 24VAC @ 7A (170VA)
or 28VAC @ 6A (170VA).
- Sixteen (16) Fuse Protected Outputs.

ALTV2416300UL3

- 24VAC @ 7A (175VA)
or 28VAC @ 6.25A (175VA).
- Eight (8) Fuse Protected Outputs.

ALTV2416300ULM3

- 24VAC @ 12.5A (300VA)
or 28VAC @ 10A (280VA).
- Sixteen (16) Fuse Protected Outputs.

ALTV2416600UL3

- 24VAC @ 25A (600VA)
or 28VAC @ 20A (560VA).
- Sixteen (16) Fuse Protected Outputs.

ALTV2416ULCBX3

- 24VAC @ 7A (170VA)
or 28VAC @ 6A (170.5VA).
- Sixteen (16) PTC Protected Outputs.

ALTV2416300ULCB3

- 24VAC @ 12.5A (300VA)
or 28VAC @ 10A (280VA).
- Sixteen (16) PTC Protected Outputs.

ALTV2416300ULCBM3

- 24VAC @ 12.5A (300VA)
or 28VAC @ 10A (280VA).
- Sixteen (16) PTC Protected Outputs.

ALTV2416600ULCB3

- 24VAC @ 25A (600VA)
or 28VAC @ 20A (560VA).
- Sixteen (16) PTC Protected Outputs.

Installation Guide



Rev. 040506



More than just power.™



Installing Company: _____ Service Rep. Name: _____

Address: _____ Phone #: _____

Overview:

Altronix ALTV2416UL3 Series CCTV Power Supplies provide 24VAC or 28VAC distributed via sixteen (16) fuse or PTC protected outputs for powering CCTV cameras, heaters and other video accessories.

Sixteen (16) Output ALTV2416UL3 Reference Chart:

Altronix Model Number	Output Voltage	Total Output Current (Power)	Number of Outputs	PTC Protected auto-resettable Outputs (Class 2 Rated power-limited for Dry locations, Class 3 for Wet locations)	Fuse Protected Class 1 Outputs	Individual Output Current (max per output, not to exceed total output current)	Fuse Ratings	Main Fuse Ratings	Primary In-line Fuse Ratings	115VAC 60Hz Input Current	Agency Listings
ALTV2416ULX3	24VAC	7A	16	-	✓	3.5A	3.5A	5A/250V	3.5A/250V	1.8A	 
	28VAC	6A									
ALTV2416ULCBX3	24VAC	7A	16	✓	-	2.5A	-	5A/250V	3.5A/250V	1.8A	
	28VAC	6A									
ALTV2416300UL3	24VAC	12.5A	16	-	✓	3.5A	3.5A	15A/32V	-	2.7A	
	28VAC	10A									
ALTV2416300ULCB3	24VAC	12.5A	16	✓	-	2.5A	-	15A/32V	-	2.7A	
	28VAC	10A									
ALTV2416300ULM3	24VAC	12.5A	16	-	✓	3.5A	3.5A	-	-	2.7A	
	28VAC	10A									
ALTV2416300ULCBM3	24VAC	12.5A	16	✓	-	2.5A	-	-	-	2.7A	
	28VAC	10A									
ALTV2416600UL3	24VAC	25A	16	-	✓	3.5A	3.5A	15A/32V	-	5.4A	
	28VAC	20A									
ALTV2416600ULCB3	24VAC	25A	16	✓	-	2.5A	-	15A/32V	-	5.4A	
	28VAC	20A									

Specifications:

Agency Listings:

- UL Listed for Commercial CCTV Equipment (UL 2044).
CUL Listed - CSA Standard C22.2 No.1-98, Audio, Video and Similar Equipment.
- CE European Conformity.

Input:

- 115VAC, 50/60Hz.

Output:

- Sixteen (16) fuse or PTC protected outputs.
- 24VAC or 28VAC output
- Outputs are rated @ 3.5A (fused) or 2.5A (PTC).
- Surge suppression.

Features:

- Unit maintains camera synchronization.
- AC power LED indicator.

Features (cont'd):

- Power ON/OFF switch (ALTV2416ULX3, ALTV2416ULXCB3).
- Illuminated power disconnect circuit breaker with manual reset (all other models).
- Ease of installation saves time and eliminates costly labor.
- Spare fuses included (on fuse protected models).
- Factory installed 3-wire line cord.

Enclosure Dimensions (H x W x D):

- ALTV2416300ULM3, ALTV2416300ULCBM3:**
8.5" x 7.5" x 3.875" (215.9mm x 191mm x 98.4mm).
- ALTV2416ULX3, ALTV2416ULCBX3, ALTV2416300UL3, ALTV2416300ULCB3, ALTV2416600UL3 and ALTV2416600ULCB3:**
13.5" x 13" x 3.25" (342.9mm x 330.2mm x 82.6mm).

Installation Instructions:

Wiring methods shall be in accordance with the National Electrical Code/NFPA 70/NFPA 72/ANSI, and with all local codes and authorities having jurisdiction. Product is intended for indoor use only.

1. Mount unit in the desired location. Mark and predrill holes in the wall to line up with the top two keyholes in the enclosure. Install two upper fasteners and screws in the wall with the screw heads protruding. Place the enclosure's upper keyholes over the two upper screws, level and secure. Mark the position of the lower two holes. Remove the enclosure. Drill the lower holes and install the three fasteners. Place the enclosure's upper keyholes over the two upper screws. Install the two lower screws and make sure to tighten all screws (*Enclosure Dimensions, pg. 11 - 12*). Secure enclosure to earth ground.
2. Set power switch on power distribution board marked [PD] to OFF position for models ALTV2416ULX3 or ALTV2416ULCBX3 (*Fig. 1, 2, pg. 4, 5*). Set power disconnect circuit breaker to OFF position for all other models (*Fig. 3a - 8a, pg. 6 - 10*).
3. All units are factory set for 24VAC operation.
For 28VAC operation, adjust unit prior to mounting and applying power as follows:
Change the wire position so that the wire marked [28V] is connected to the terminal marked [P] and the wire marked [24V] is connected to the terminal marked [S].
Note: ALTV2416ULCBX3 set for 28VAC operation is not Class 2 Rated, not power-limited.
4. Plug-in 3-wire line cord (*Fig. 1 - 8, pg. 4 - 10*).
Keep power-limited (PTC protected outputs only) wiring separate from non power-limited wiring. Minimum 0.25" spacing must be provided. Use separate knockouts.
5. Set power switch on power distribution board marked [PD] to ON position for models ALTV2416ULX3 or ALTV2416ULCBX3 (*Fig. 1, 2, pg. 4, 5*). Set power disconnect circuit breaker to RESET (ON) position for all other models (*Fig. 3a - 8a, pg. 6 - 10*).
6. Measure output voltage before connecting devices. This helps avoiding potential damage. Terminals marked [1P - 16P] are of the same polarity.
CAUTION: Determine the maximum operating voltage of the equipment being powered before adjusting the output voltage.
7. Set power switch on power distribution board marked [PD] to OFF position for models ALTV2416ULX3 or ALTV2416ULCBX3 (*Fig. 1, 2, pg. 4, 5*). Set power disconnect circuit breaker to OFF position for all other models (*Fig. 3a - 8a, pg. 6 - 10*).
8. Connect devices to terminals marked [1P - 1N] through [8P - 8N] on PD8 board (*Fig. 1 - 4, pg. 4 - 7, Fig. 7 - 8, pg. 9 - 10*), or terminals marked [1P - 1N] through [16P - 16N] on PD16W/PD16WCB board (*Fig. 5 - 6, pg. 8*), carefully observing polarity.
9. Set power switch on power distribution board marked [PD] to ON position for models ALTV2416ULX3 or ALTV2416ULCBX3 (*Fig. 1, 2, pg. 4, 5*). Set power disconnect circuit breaker to RESET (ON) position for all other models (*Fig. 3a - 8a, pg. 6 - 10*).
10. Green LED will illuminate when power is present.
11. Upon completion of the wiring, secure enclosure door with screws (supplied). Installation of cam lock is optional.
**Caution: Equipment to be installed/serviced by authorized/trained personnel only.
Shut branch circuit power before installing/servicing equipment.**

WARNING: To reduce the risk of fire or electric shock, do not expose the unit to rain or moisture. This installation should be made by qualified service personnel and should conform to the National Electrical Code and all local codes. Use 75°C or higher rated UL insulated wiring for connecting the unit to the mains. Replace fuses with the same type and rating (refer to Sixteen (16) Output ALTV2416UL3 Reference Chart, pg. 2).

Terminal Identification:

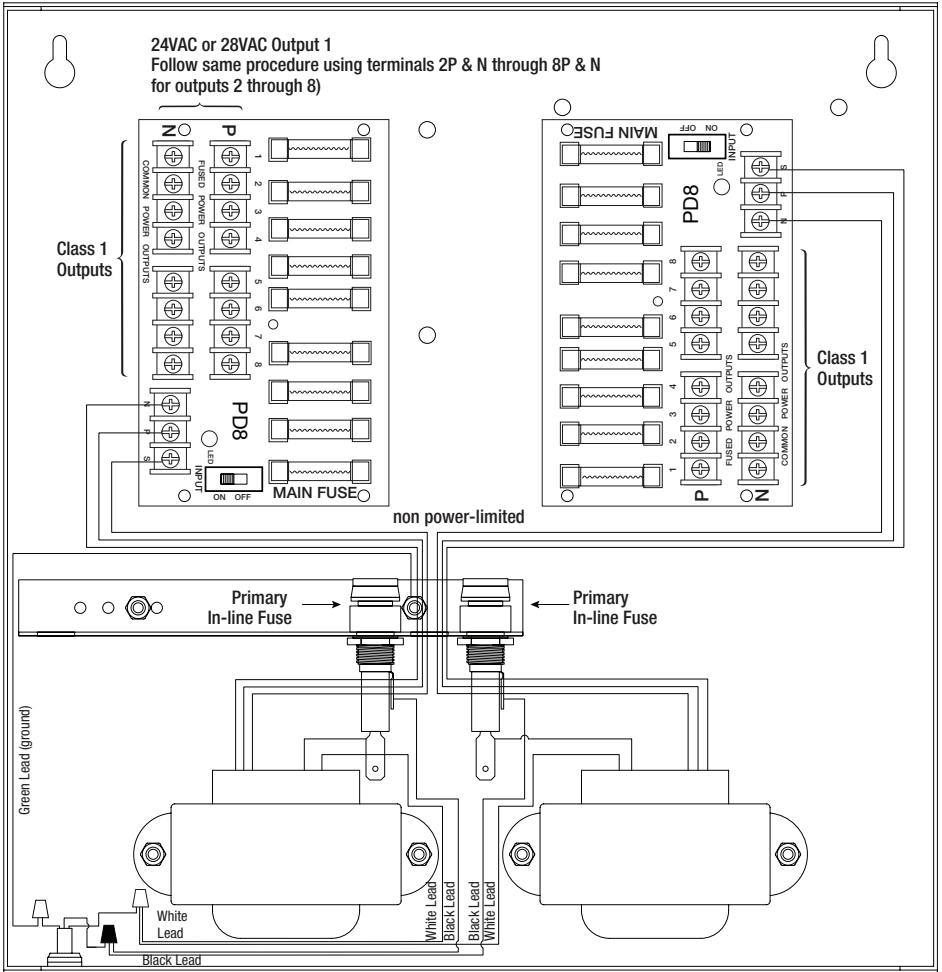
PD8/PD8CB - Distribution Module

1P - 8P	AC output.
1N - 8N	AC output.

PD16W/PD16WCB - Distribution Module

1P - 16P	AC output.
1N - 16N	AC output.

Fig. 1 - ALTV2416ULX3



Input 115VAC,
50/60Hz

Voltage Selection Configuration

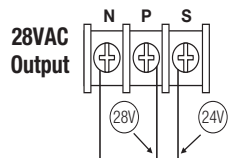
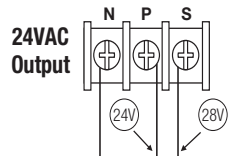
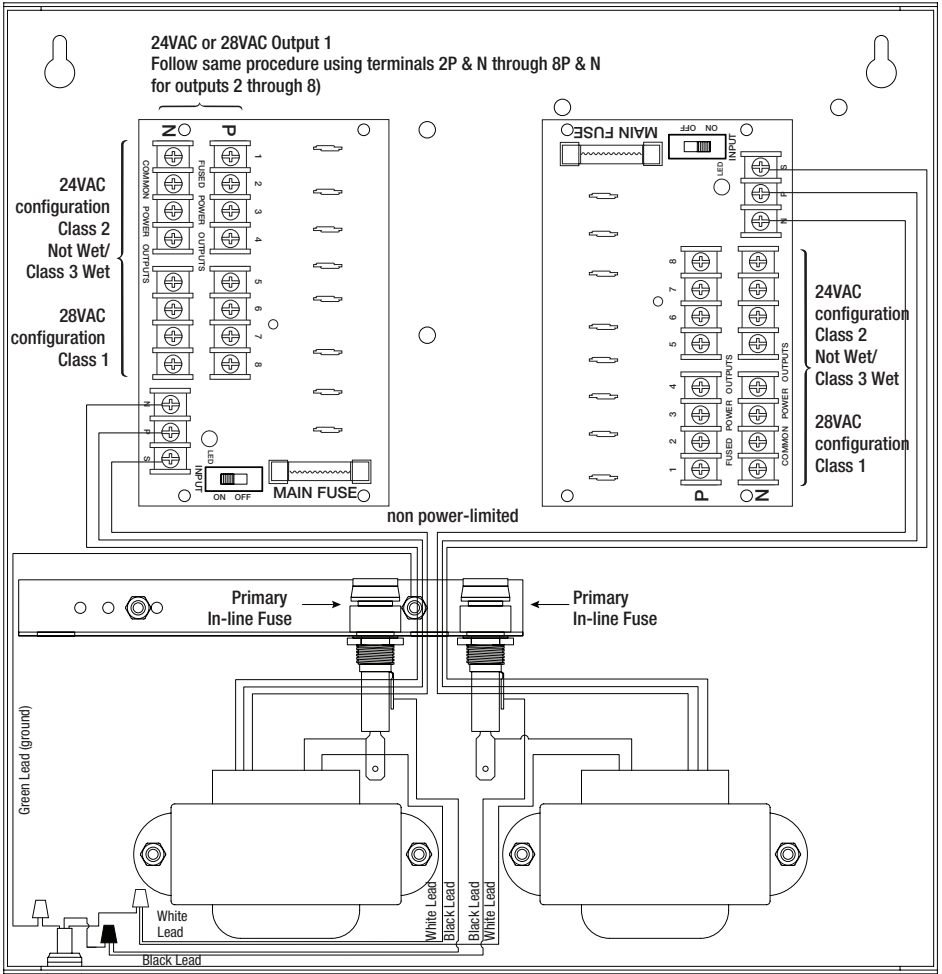


Fig. 2 - ALTV2416ULCBX3



Input 115VAC,
50/60Hz

Voltage Selection Configuration

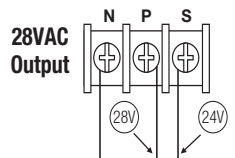
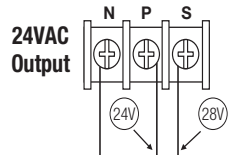
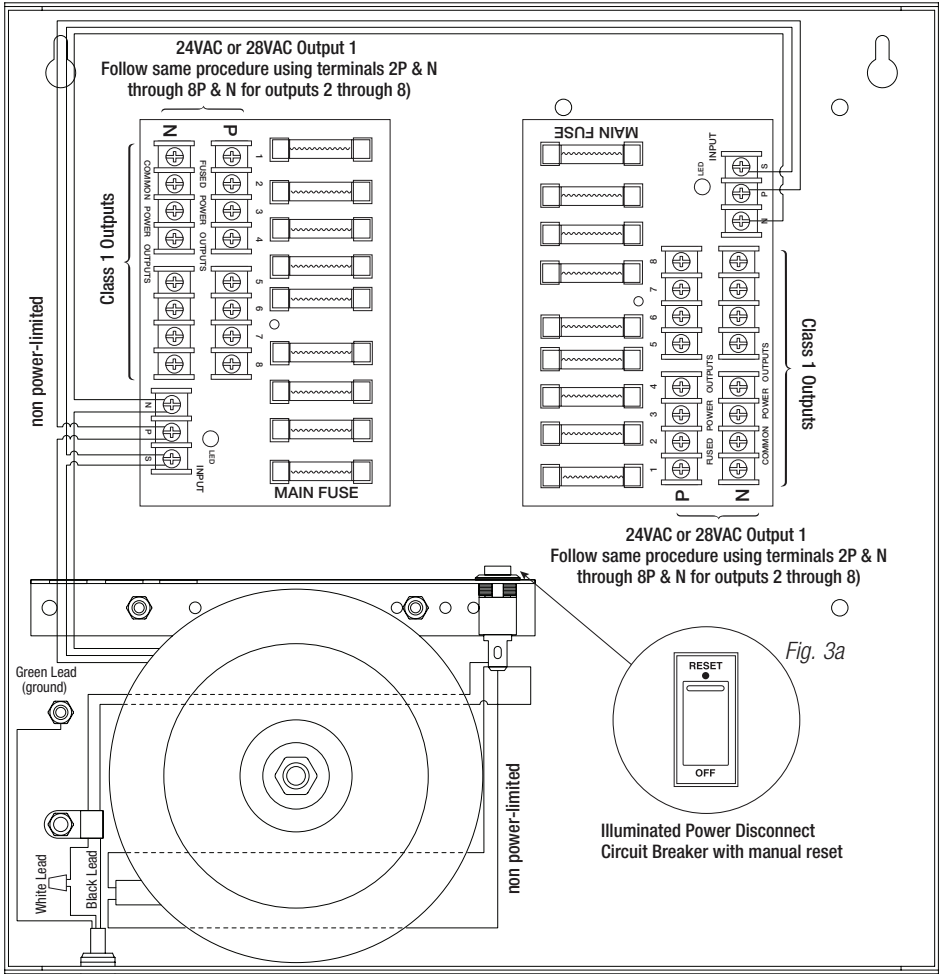


Fig. 3 - ALTV2416300UL3



Voltage Selection Configuration

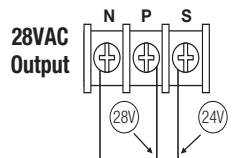
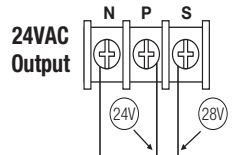
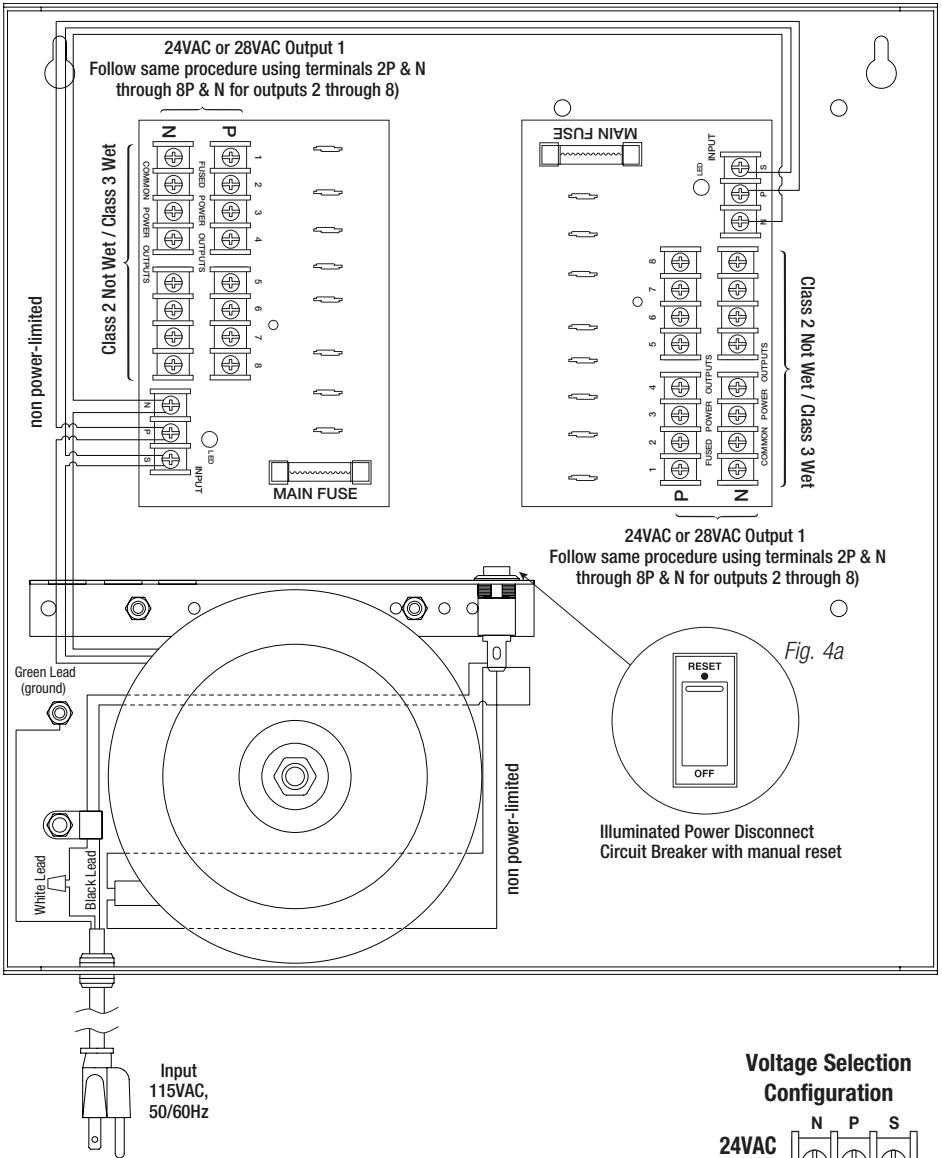


Fig. 4 - ALTV2416300ULCB3



Voltage Selection Configuration

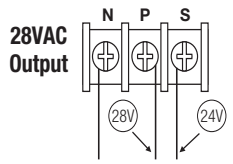
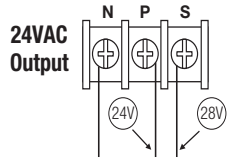


Fig. 5 - ALTV2416300ULM3

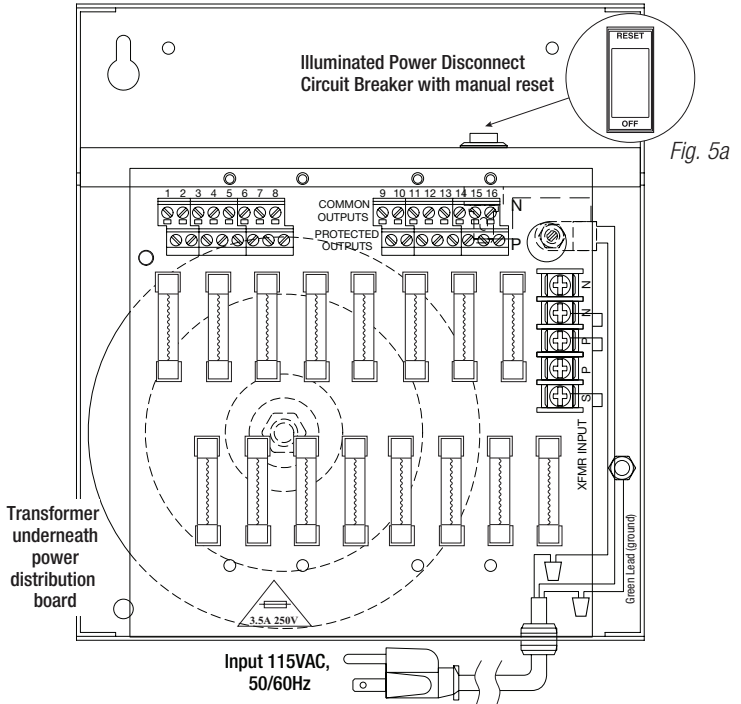


Fig. 5a

Fig. 6 - ALTV2416300ULCBM3

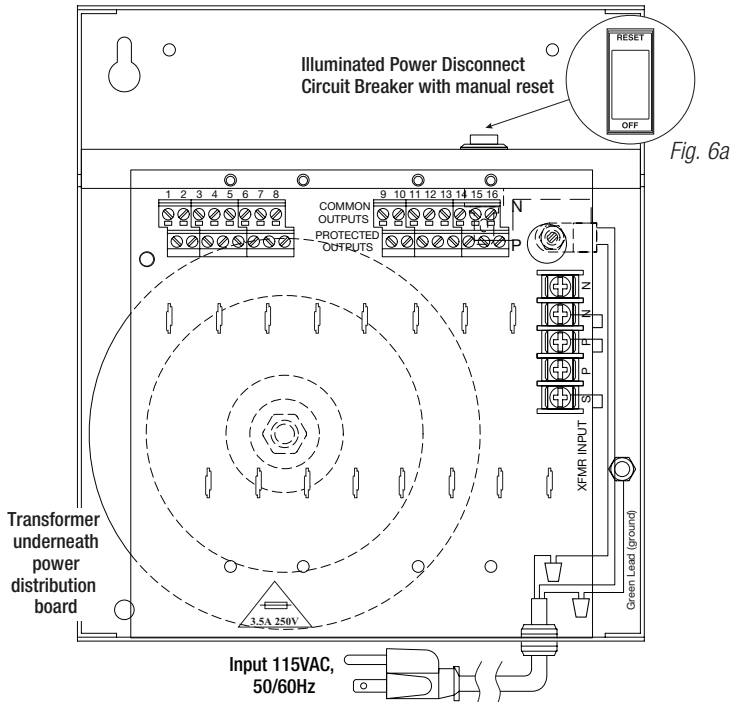
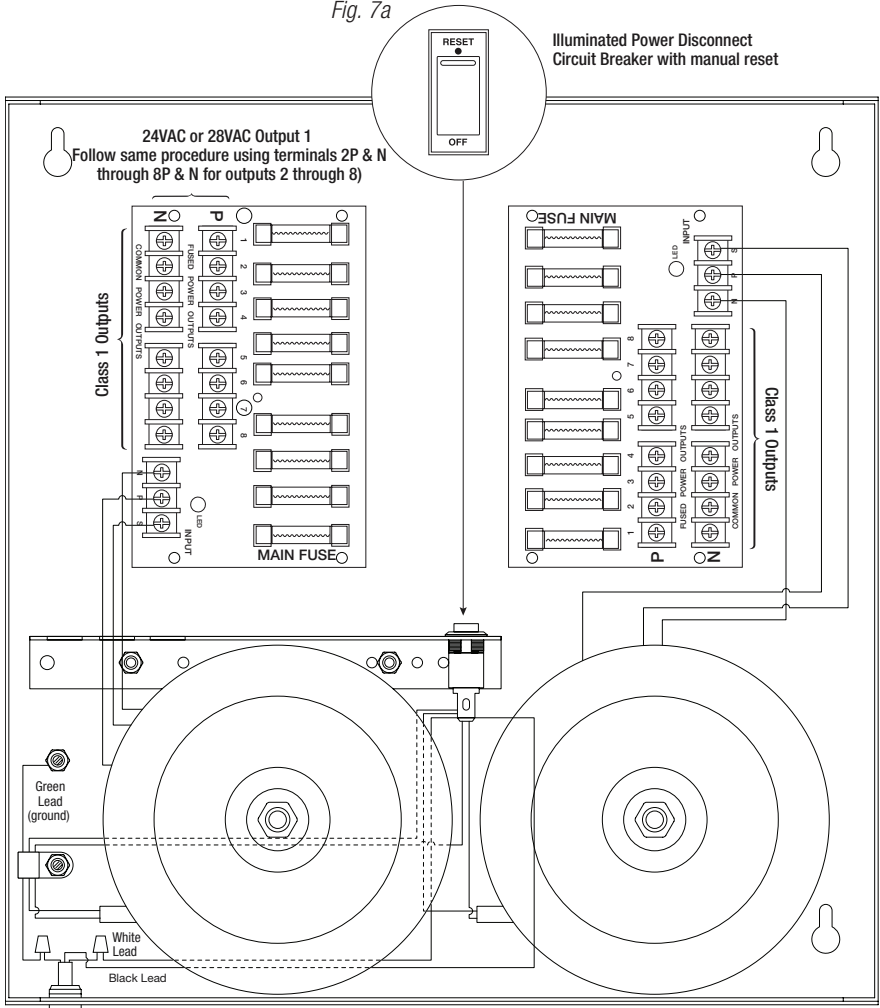


Fig. 6a

Fig. 7 - ALTV2416600UL3

Fig. 7a



24VAC or 28VAC Output 1
Follow same procedure using terminals 2P & N through 8P & N for outputs 2 through 8)

Illuminated Power Disconnect
Circuit Breaker with manual reset

Class 1 Outputs

Class 1 Outputs

Voltage Selection Configuration

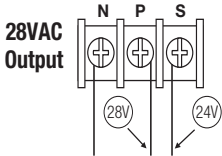
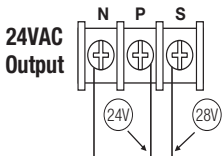
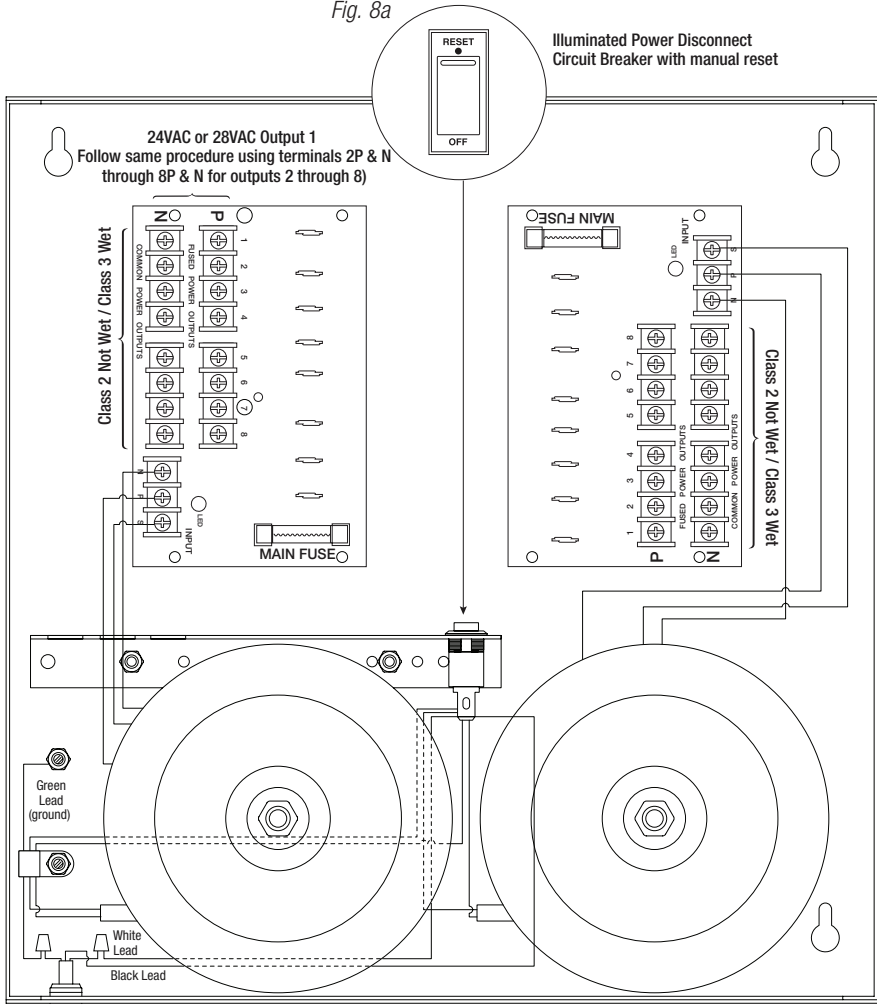


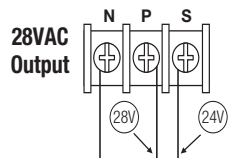
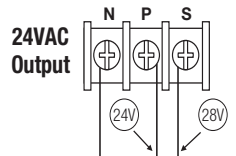
Fig. 8 - ALTV2416600ULCB3

Fig. 8a



Illuminated Power Disconnect
Circuit Breaker with manual reset

**Voltage Selection
Configuration**





The lightning flash with arrowhead symbol within an equilateral triangle is intended to alert the user to the presence of an insulated **DANGEROUS VOLTAGE** within the product's enclosure that may be of sufficient magnitude to constitute an electric shock.



The exclamation point within an equilateral triangle is intended to alert the user to the presence of important operating and maintenance (servicing) instructions in the literature accompanying the appliance.



CAUTION
RISK OF ELECTRIC SHOCK
DO NOT OPEN

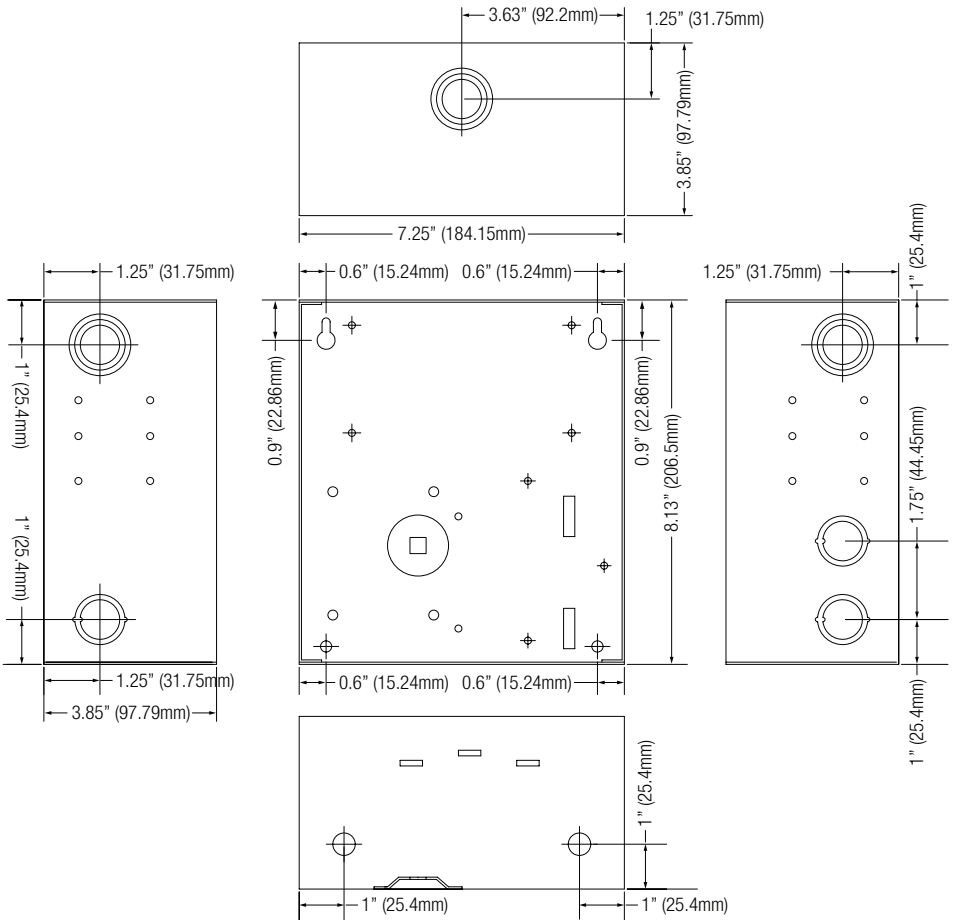


CAUTION: To reduce the risk of electric shock do not open enclosure. There are no user serviceable parts inside. Refer servicing to qualified service personnel.

Enclosure Dimensions (H x W x D):

• ALTV2416300ULM3 • ALTV2416300ULCBM3

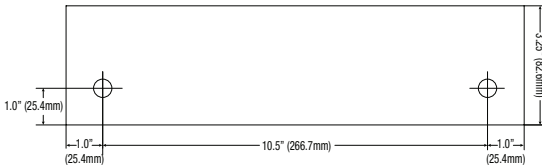
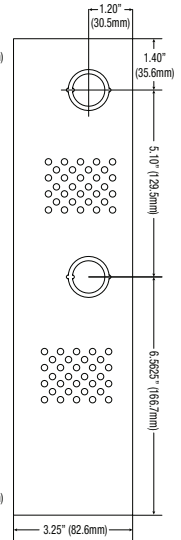
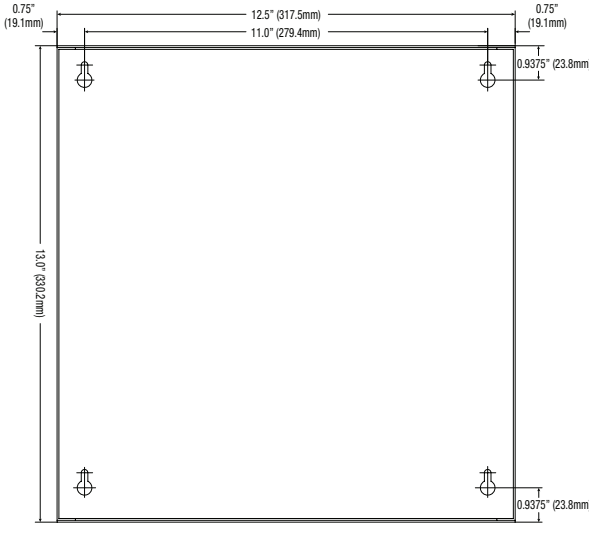
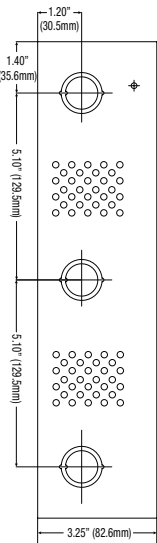
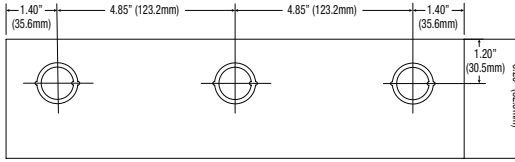
8.5" x 7.5" x 3.875" (215.9mm x 191mm x 98.4mm)



Enclosure Dimensions (H x W x D) for:

- ALTV2416ULX3 • ALTV2416ULCBX3
- ALTV2416300UL3 • ALTV2416300ULCB3
- ALTV2416600UL3 • ALTV2416600ULCB3

13.5" x 13" x 3.25" (342.9mm x 330.2mm x 82.6mm)



Altronix is not responsible for any typographical errors.

140 58th Street, Brooklyn, New York 11220 USA | phone: 718-567-8181 | fax: 718-567-9056

website: www.altronix.com | e-mail: info@altronix.com | Lifetime Warranty

IIALTV2416UL3 Series

L02U



MEMBER