

AVC-VNN81AVLT/V2
8MP H.265 IR WATER-PROOF DOME NETWORK CAMERA



8MP H.265 IR WATER-PROOF DOME NETWORK CAMERA

8MP H.265 IR WATER-PROOF DOME NETWORK CAMERA WITH SMART FEATURES

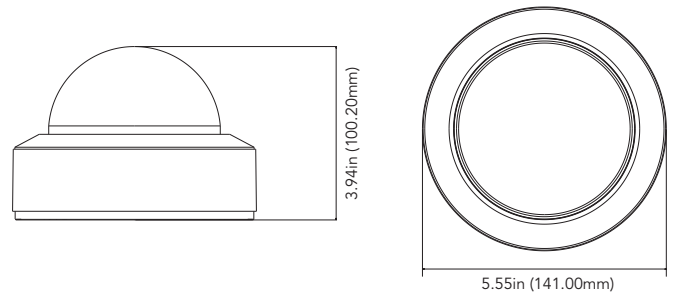
The AVYCON AVC-VNN81AVLT/V2 camera is a 8MP H.265 HD AI Dome Network Camera with Smart Analytic Features. This 8MP IP camera supports True Day/Night mode, PoE, and Smart IR Illumination of up to 164ft. This camera includes a Motorized zoom 2.8~12mm Lens with Auto-Focus capabilities that can be controlled through an NVR. Also supports 3D Digital NR, ROI, HLC, True WDR, and BLC capabilities along with IP67 outdoor rating. Optional accessories for this camera include a Junction Box Mount, Wall Mount, Corner Mount Bracket, and a Pole Mount Bracket.

FUNCTIONS

- 8MP (3840 X 2160) @ 30fps
- Max. Resolution: 3840 × 2160
- Supports Smart H.265/H.264 Encoding
- True Day & Night ICR
- Up to 164 ft. IR Illumination
- Motorized Zoom 2.8~12mm Lens
- 3D DNR, DWDR, HLC, BLC and ROI Encoding
- Supports Triple Streams
- 1CH audio input, 1CH audio output and 1CH built-in MIC
- 1CH alarm input; 1CH alarm output
- Support NIR and image distortion correction
- Supports Remote Access with Windows, macOS, iOS and Android
- IP67 Ingress Protection
- Built-in micro SD card slot, up to 256GB
- DC12V / PoE (802.3af, ≤9W)
- P2P Function Optional
- Intelligent Analytics

DIMENSIONS

Unit : inch (mm)



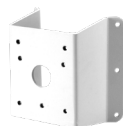
OPTIONAL ACCESSORIES



AVM-MDMT-W-TL1
 JUNCTION BOX



AVM-MWMT-W-TL1
 WALL MOUNT
 (AVM-MDMT-W-TL1
 Junction Box Required)



AVM-P-CMT
 CORNER MOUNT BRACKET



AVM-P-PMT
 POLE MOUNT BRACKET



AVM-RM-V-L1
 RECESSED CEILING MOUNT



AVC-VNN81AVLT/V2

8MP H.265 IR WATER-PROOF DOME NETWORK CAMERA

SPECIFICATIONS

CAMERA					
Image Sensor	1/2.8" Progressive Scan CMOS				
Image Size	3840 x 2160				
Shutter Speed	1/3s to 1/100,000s				
Iris Type	Fixed Iris				
Min. Illumination	Color: 0.015 lux @ F1.4(AGC ON); BW: 0 lux with IR				
IR Distance	Up to 164ft				
Lens	Motorized 2.8 ~ 12mm @ F1.4 Horizontal FoV: 97° ~ 32° Vertical FoV: 57° ~ 18° Diagonal FoV: 115° ~ 36°				
Lens Mount	Ø14				
Day & Night	ICR				
Wide Dynamic Range	120dB				
Digital NR	3D DNR				
Backlight Compensation (BLC)	Yes				
Highlight Compensation (HLC)	Yes				
Defog	Yes				
S/N Ratio	≥50dB				
EIS	Yes				
Angle Adjustment	Pan: 0°~345° ; Tilt: 0°~77° ; Rotation:0°~345°				
VIDEO IMAGE					
Video Compression	Main stream: H.265+ / H.265 / H.264+ / H.264 Sub/third stream: H.265+ / H.265 / H.264+ / H.264 / MJPEG				
H.264 Compression Standard	Baseline Profile/Main Profile/High Profile				
Resolution	8MP (3840×2160), 6MP (3072×2048), 5MP (2592×1944), 4MP (2592×1520), 2K (2560×1440), 3MP (2304×1296), 1080P (1920×1080), 720P (1280×720), D1, CIF, 480 × 240, VGA (640×480)				
Main Stream	60Hz: 8MP/6MP/5MP/4MP/2K/3MP/1080P/720P (1~30fps); 50Hz: 8MP/6MP/5MP/4MP/2K/3MP/1080P/720P (1~25fps); HFR mode: 1080P/720P (60Hz: 1~60fps; 50Hz: 1~50fps)				
Sub Stream	60Hz: 720P/D1/CIF/VGA/480x240 (1~30fps); 50Hz: 720P/D1/CIF/VGA/480x240 (1~25fps)				
Third Stream	60Hz: 720P/D1/VGA/480x240/CIF (1~30fps); 50Hz: 720P/D1/VGA/480x240/CIF (1~25fps)				
Video Bit Rate	64 Kbps ~ 12 Mbps (CBR / VBR Adjustable)				
Image Settings	ROI, Saturation, Brightness, Hue, Contrast, Wide Dynamic, Sharpness, Image Mirror, Image Flip, NR, etc. adjustable through client software or web browser				
ROI	Each ROI to be configured separately				
NETWORK / INTERFACE					
Network	1 x RJ45 10M / 100M Self-Adaptive Ethernet port				
Network Protocol	UDP, IPv4, IPv6, DHCP, NTP, RTSP, RTP, RTMP, RTCP, PPPoE, DDNS, SMTP, FTP, SNMP, HTTP, HTTP POST, 802.1x, UPnP, HTTPs, QoS				
Interface Protocol	ONVIF (Profile S, G, T, M)				
Web Browser	IE11 (Plug-in required) / Google Chrome 89.0+ / Edge 89.0+ / Firefox 87.0+ / Safari 14.0+				
Online Connection	Support simultaneous monitoring for up to 10 users; Support multi-stream real time transmission				
Storage	Network remote storage; micro SD card storage (256GB)				
Video Output	CVBS output (BNC x 1)				
Audio	1CH audio input; 1CH audio output; 1CH build-in MIC				
Audio Compression	G711A / U				
Alarm	1CH alarm input; 1CH alarm output				
Hardware Reset	Yes				
DORI DISTANCE					
	Lens	Detect	Observe	Recognize	Identify
	2.8 ~ 12mm (W)	262ft (80m)	105ft (32m)	52ft (16m)	26ft (8m)
	2.8 ~ 12mm (T)	896ft (273m)	358ft (109m)	180ft (55m)	89ft (27m)
FUNCTION					
Remote Monitoring	Web Browser Interface, Mobile App, AVYCON CVMS 2.0				
Smart Alarm	Motion detection, sensor detection, SD card error, SD card full, IP address conflict, cable disconnection				
Smart Analytics	Line crossing, region intrusion/entrance/exiting detection (human/motor vehicle/non-motor vehicle classification), abandoned /missing object detection, Target counting by line/intrusion area/heat map, exception detection, face detection and face capture				
Video Metadata	Simultaneously captures human body, motor vehicle and non-motor vehicle and extracts 13 human features, 5 motor vehicle features and 1 non-motor vehicle feature				
General Function	Watermark, IP address filtering, video mask, heartbeat, password protection, image distortion correction, corridor pattern				
GENERAL					
Power Supply	DC12V / PoE (IEEE802.3af)				
Power Consumption	<10.5W				
Operating Environment	-30°C ~ 60°C (-22°F ~ 140°F)Humidity: less than 95% (non-condensing)				
Storage Environment	-30°C ~ 65°C (-22°F ~ 149°F)Humidity: less than 95% (non-condensing)				
Dimensions (in)	Ø 5.55 x 3.94				
Weight (lb)	Approx. 1.96 lbs				
Ingress Protection	IP 67 & IK 10				
Certificate	CE, FCC				
Installation	Ceiling mounting; Wall mounting				
Environmental Protection	Complies with Directive EU RoHS, WEEE(2012/19/EU), directive 94/62/EC and REACH (EC1907/2006)				



AVYCON[®]

Copyright © AVYCON. All rights reserved. Specifications and pricing are subject to change without notice.

phone: 949-752-7606

email: info@avycon.com

social: @avycon_aivo

website: avycon.com