

# NetWay4E1WP

## 4-port PoE+ Hardened Switch



Altronix NetWay4E1WP Outdoor PoE+ Hardened Switch provides a 1Gb SFP port and four (4) PoE+ (30W) ports. Cameras/edge devices may be located up to 100m from the unit.



NetWay4E1WP

### Key Features

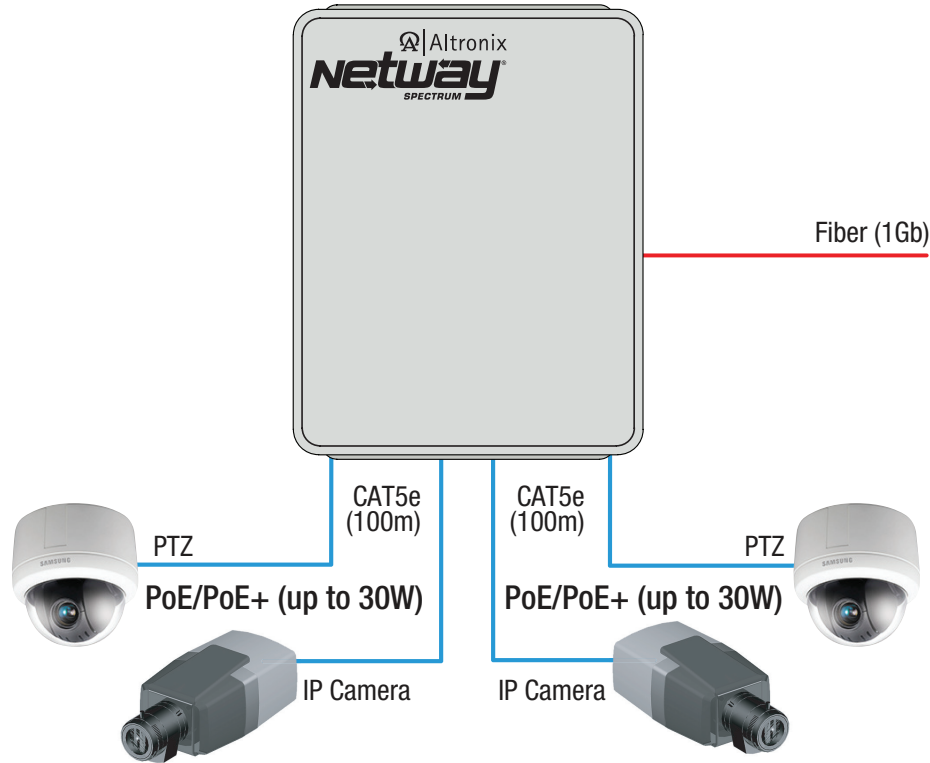
- Four (4) 10/100/1000 Mbps PoE/PoE+ (up to 30W) ports
- IEEE 802.3af (15W) and IEEE 802.3at (30W) compliant
- 120W total power
- One (1) Gigabit SFP port
- NEMA4/4X, IP66 Rated enclosure for outdoor use
- Built-in charger for sealed lead acid or gel type batteries
- Automatic switch over to stand-by battery when AC fails
- PoE activity LED indicators
- CE European Conformity
- Lifetime Warranty

### Similar products

<b>NetWay4E1WPX</b>	Outdoor 4-port PoE+ Hardened Switch in NEMA 4/4X, IP66-11 enclosure which accommodates stand-by batteries
<b>NetWay4E1WPN</b>	Outdoor 4-port PoE+ Hardened Switch only in NEMA 4/4X, IP66-11 enclosure
<b>NetWay4E1PL</b>	4-port PoE+ Hardened Switch with Integral Power on a Backplane
<b>NetWay4E1X</b>	Indoor 4-port PoE+ Hardened Switch in NEMA 1 Rated indoor enclosure
<b>NetWay4E1B</b>	4-port PoE+ Hardened Switch (board only)

### Lifetime Warranty

**Typical Application**



**Accessories** (order separately)



**SFP Modules - Hot Pluggable Transceivers**

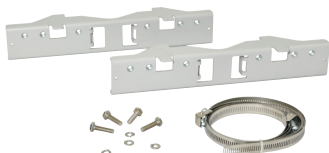
- P1MM Multi-Mode SFP Module for distances up to 550m
- P1SM10 Single-Mode SFP Module for distances up to 10km
- P1AB2K Single Strand SFP Module for distances up to 2km
- P1GCE Copper SFP Module for distances up to 100m



**NetWaySP1A**

Ethernet over Fiber Media Converter/Repeater for Applications Requiring an Additional SFP (Fiber) Port

NetWaySP1A PoE powered media converter/repeater converts 10/100/1000 Mbps to Fiber (1000Base-X/SX/LX).



**PMK1 - Pole Mount Kit**

PMK1 pole mount kit is designed to simplify installation of outdoor units. It accommodates 2" - 8" (diameter) poles.

**Lifetime Warranty**



## NetWay4E1WP

4-port PoE+ Hardened Switch



### Specifications

#### Input

Voltage	115VAC, 60Hz, 2.5A or 230VAC, 50/60Hz, 1.3A
Fusing	5A/250V

#### Power Output

Maximum Power	Four (4) 10/100/1000 Mbps PoE/PoE+ (up to 30W) ports IEEE 802.3af (15W) and IEEE 802.3at (30W) compliant 120W total power Integral surge protection
Fiber Port:	One (1) Gigabit SFP port

#### Indicators (LED)

- Individual PoE On LEDs for each port
- Individual IP Link status, 10/100Base-T/active LEDs for each port
- ALOS LED indicates fiber connection for SFP port
- Heartbeat LED indicates proper operation of the unit

#### Battery Charging

Type	Sealed lead acid or gel type
Failover	Upon AC loss, instantaneous
Batteries are sold separately	
Separate ventilated enclosure is required	

#### Agency Listings

CE	European Conformity
----	---------------------

#### Physical and Environmental

##### Dimensions (H x W x D)

Enclosure:	13.31" x 11.31" x 5.59" (338.1mm x 287.3mm x 142mm)
Shipping:	20.25" x 12.5" x 7.25" (514.4mm x 317.5mm x 184.2mm)
NEMA 4/4X, IP66-11 Rated enclosure for outdoor use	

##### Weight (approx.)

Product:	10.32 lb. (4.68 kg)
Shipping:	11.7 lb. (5.3 kg)

##### Temperature

Operating:	
60W:	- 40°C to 75°C (- 40°F to 167°F)
75W:	- 40°C to 70°C (- 40°F to 158°F)
100W:	- 40°C to 55°C (- 40°F to 131°F)
120W:	- 40°C to 45°C (- 40°F to 113°F)
Storage:	- 40°C to 85°C (- 40°F to 185°F)

Relative Humidity 85% +/- 5%

BTU/Hr (approx.) 61 BTU/Hr.

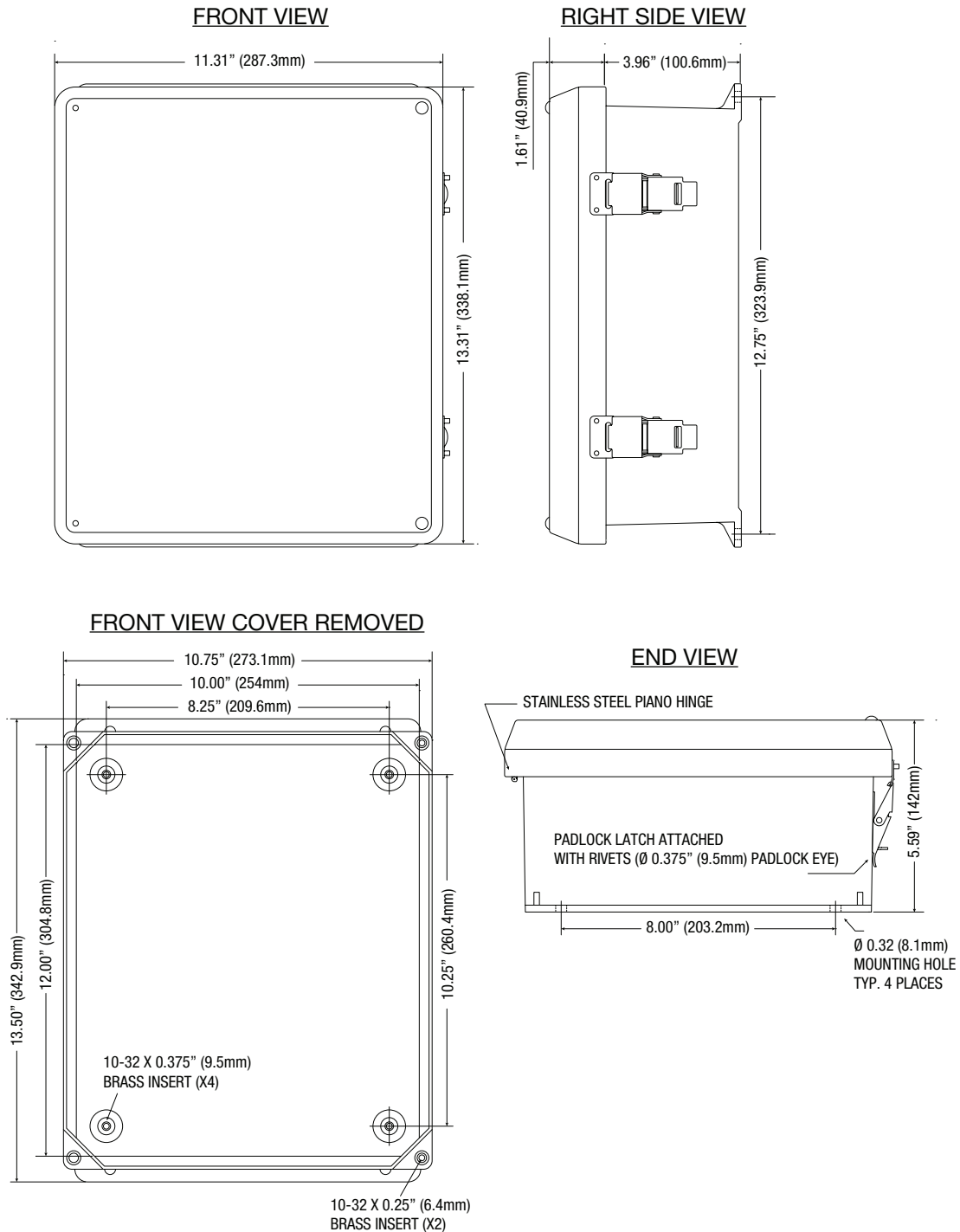
Operating Altitude: - 304.8 to 2,000m

#### Lifetime Warranty

## Dimensions and Drawing

Dimensions (H x W x D approximate)

13.31" x 11.31" x 5.59" (338.1mm x 287.3mm x 142mm)



### Lifetime Warranty

Altronix Corporation | 140 58th St | Brooklyn, NY 11220 USA

phone: +1 718.567.8181 | fax: +1 718.567.9056 | email: info@altronix.com | www.altronix.com