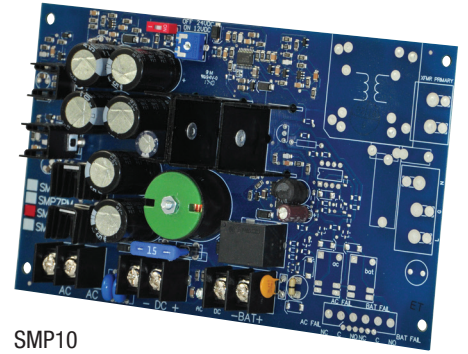


SMP10

Power Supply/Charger Board

Altronix SMP10 power supply/charger converts a low voltage AC input into a 12VDC or 24VDC output. This unit has a wide range of applications for access control, security, and CCTV system accessories that require additional power.



SMP10

Specifications

Input

Voltage 24VAC or 28VAC

Outputs

Output Voltage/Current	Required Input Voltage	Altronix Transformer
12VDC @ 10A	24VAC or 28VAC / 175VA	T2428175
24VDC @ 6A	28VAC / 175VA	T2428175
24VDC @ 10A	28VAC / 300VA	T2428300

Other Short circuit and thermal overload protection
Filtered and regulated

Battery Charging

Type Sealed lead acid or gel type
Failover Upon AC loss, instantaneous
Batteries are sold separately

Indicators (LED)

Input Input voltage is present
DC Output Powered

Physical and Environmental

Dimensions (L x W x H)

Board: 7" x 4.25" x 1.25" (177.8mm x 108mm x 31.8mm)
Shipping: 8" x 6" x 5" (203.2mm x 152.4mm x 127mm)

Weight (approx.)

Product Weight: 0.55 lb. (0.25 kg)
Shipping Weight: 0.7 lb. (0.32 kg)

Temperature

Operating: 0°C to 49°C (32°F to 120°F)
Storage: -20°C to 70°C (-4°F to 158°F)

Relative Humidity

85% +/- 5%

BTU/Hr (approx.):

12VDC: 61 BTU/Hr.
24VDC: 123 BTU/Hr.

Lifetime Warranty

SMP10

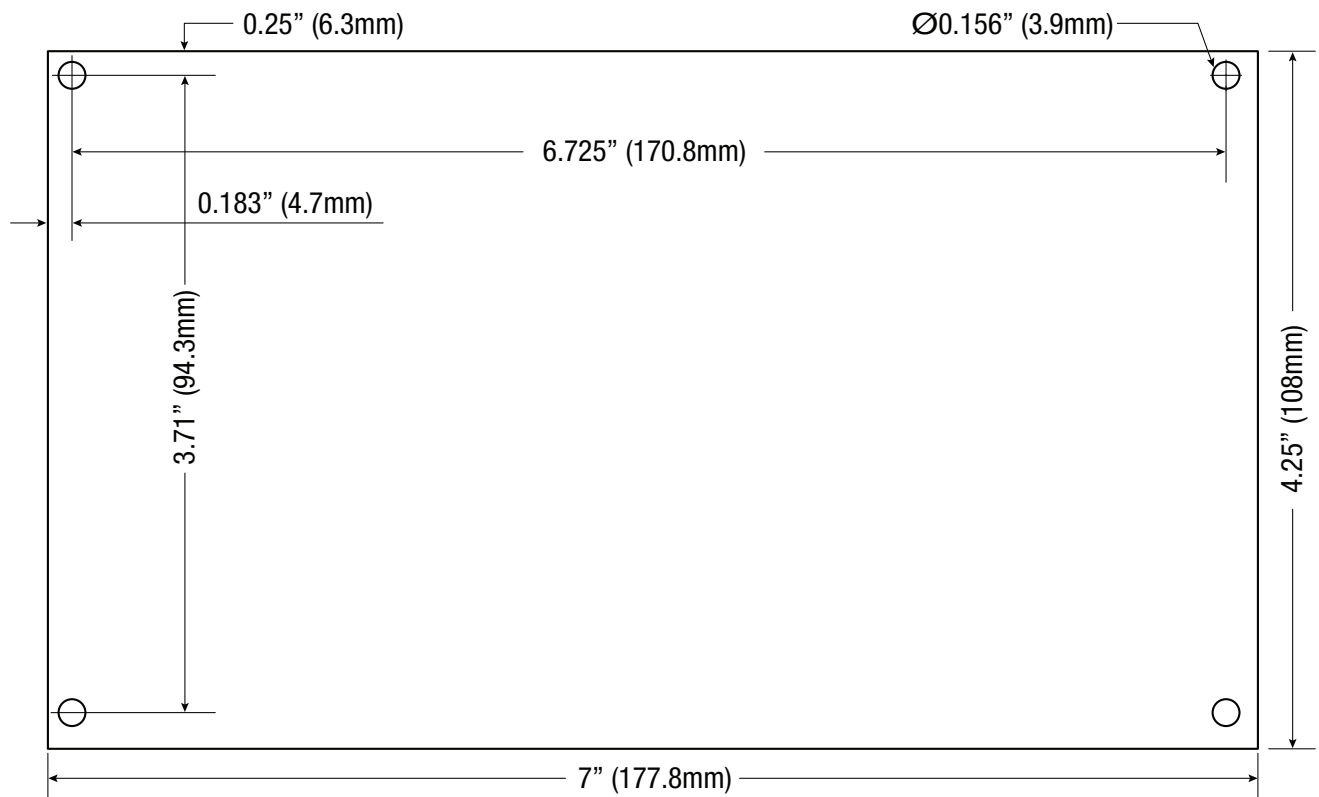
Power Supply/Charger Board

Dimensions and Drawing

Board Dimensions (L x W x H approximate)

7" x 4.25" x 1.25" (177.8mm x 108mm x 31.8mm)

Mounting Holes' Tolerance: +/- 0.04 in. (1mm)

**Lifetime Warranty**

Altronix Corporation | 140 58th St | Brooklyn, NY 11220 USA

phone: +1 718.567.8181 | fax: +1 718.567.9056 | email: info@altronix.com | www.altronix.com