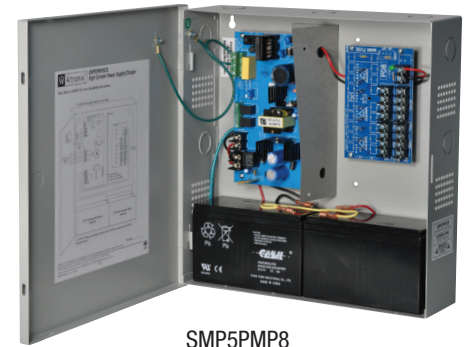


SMP5CTX Series

Power Supply/Chargers

Altronix SMP5CTX series power supply/chargers convert a 115VAC/230VAC, 50/60Hz input into a single, four (4), eight (8) or sixteen (16) fuse/PTC protected outputs. Outputs are selectable for 12VDC or 24VDC with a total of 4A max.



SMP5PMP8

Key Features

- Available with 1, 4, 8 or 16 outputs
- Fused or PTC protected outputs
- Supervision (where applicable, see Chart below):
 - AC Fail
 - Low Battery
- Built-in charger for sealed lead acid or gel type batteries
- Instantaneous transfer to stand-by batteries
- Short circuit and overload protection
- AC input and DC output LEDs
- CE European Conformity
- Lifetime Warranty

SMP5CTX series Power Supply Configuration Reference Chart

Altronix Model Number	115VAC/230VAC Input Current (A)	12/24VDC Total Output Current (A)	Accessory Power Distribution Module(s)	Number of Outputs	Fused Outputs	PTC Outputs (auto-resettable)	Individual Output Rating (A)	Supervised	Accommodates Batteries
SMP5CTX	0.95A / 0.5A	4A	-	1	-	-	4A	-	Two (2) 7AH
SMP5PMCTX			-	1	-	-	4A	-	Two (2) 7AH
SMP5PMCTXXX			-	1	-	-	4A	-	Two (2) 12AH
SMP5PMP4			PD4	4	✓	-	3.5A	✓	Two (2) 7AH
SMP5PMP4CB			PD4CB	4	-	✓	2.5A		Two (2) 7AH
SMP5PMP8			PD8	8	✓	-	3.5A		Two (2) 7AH
SMP5PMP8CB			PD8CB	8	-	✓	2.5A		Two (2) 7AH
SMP5PMP16			PD16W	16	✓	-	3.5A		Two (2) 7AH
SMP5PMP16CB			PD16WCB	16	-	✓	2.5A		Two (2) 7AH

Lifetime Warranty



SMP5CTX Series

Power Supply/Chargers

Specifications

Input

Voltage 115VAC/230VAC, 50/60Hz

Outputs

Voltage 12VDC or 24VDC selectable

Current 4A @ 12VDC or 24VDC continuous max.

Protection Fused 3.5A / PTC 2.5A

Other Overvoltage protection
Filtered and regulated

Battery Charging

Capacity 7AH/12VDC (1 or 2 within enclosure)
12AH/12VDC (requires larger "X" enclosure)
40AH/65AH (requires separate enclosure)

Type Sealed lead acid or gel type

Failover Upon AC loss, instantaneous

Batteries are sold separately

Supervision *(where applicable)*

AC Failure Form "C" contacts

Low Battery Form "C" contacts

Indicators (LED)

Input 115VAC/230VAC is present

DC Output Powered

Agency Listings

CE European Conformity

Physical and Environmental

Dimensions (H x W x D)

**SMP5CTX, SMP5PMCTX, SMP5PMP4(CB),
SMP5PMP8(CB), SMP5PMP16(CB):**

Enclosure:

13.5" x 13" x 3.25" (342.9mm x 330.2mm x 82.6mm)

Shipping:

15" x 13.875" x 4.75" (381mm x 352.4mm x 120.6mm)

SMP5PMCTXX:

Enclosure:

15.5" x 12" x 4.5" (393.7mm x 304.8mm x 114.3mm)

Shipping:

16.5" x 13.5" x 6" (419.1mm x 342.9mm x 152.5mm)

Weight (approx.)

Model	Product Weight	Shipping Weight
SMP5(PM)CTX	8.2 lb. (3.72 kg)	9.2 lb. (4.18 kg)
SMP5PMCTXX	9.3 lb. (4.22 kg)	10.6 lb. (4.81 kg)
SMP5PMP4(CB)	8.4 lb. (3.81 kg)	9.4 lb. (4.26 kg)
SMP5PMP8(CB)	8.5 lb. (3.86 kg)	9.5 lb. (4.31 kg)
SMP5PMP16(CB)	8.7 lb. (3.95 kg)	9.7 lb. (4.40 kg)

Temperature

Operating: 0°C to 49°C (32°F to 120°F)

Storage: -20°C to 70°C (-4°F to 158°F)

Relative Humidity 85% +/- 5%

BTU/Hr. (approx.):

12VDC: 25 BTU/Hr.

24VDC: 49 BTU/Hr.

Lifetime Warranty

Altronix Corporation | 140 58th St | Brooklyn, NY 11220 USA

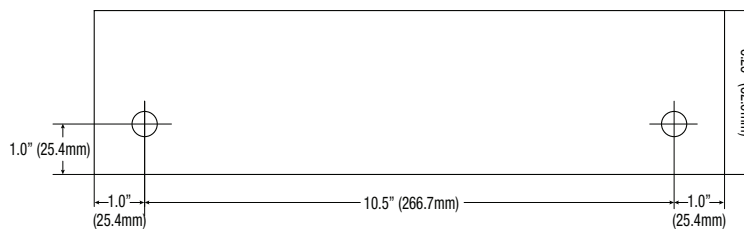
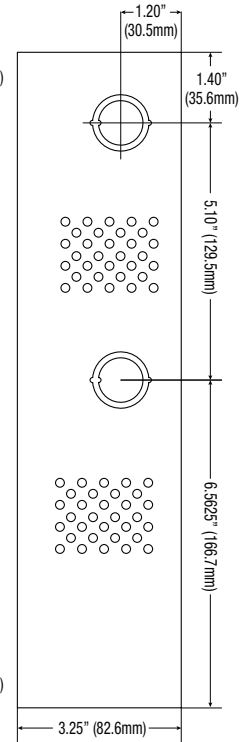
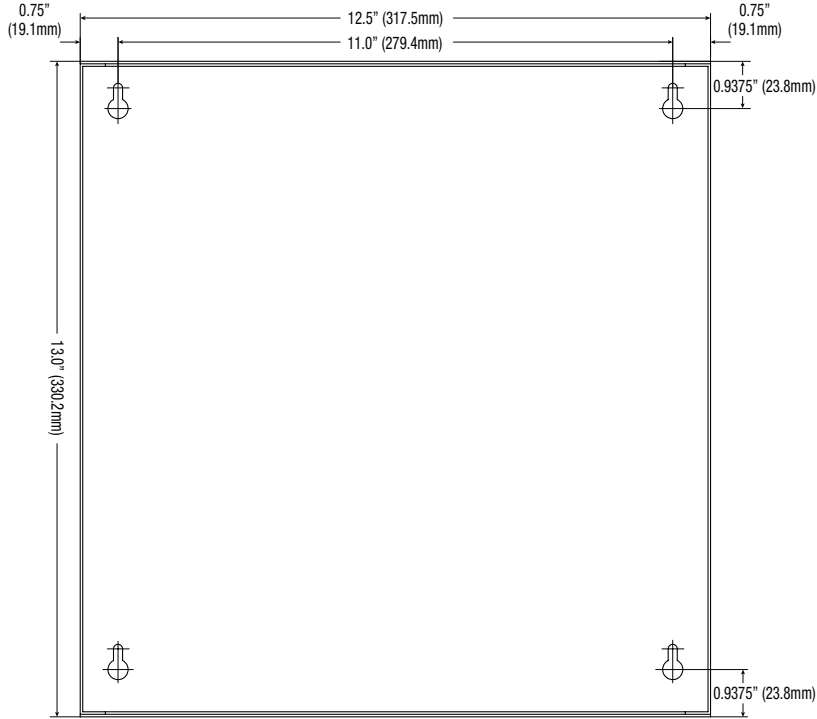
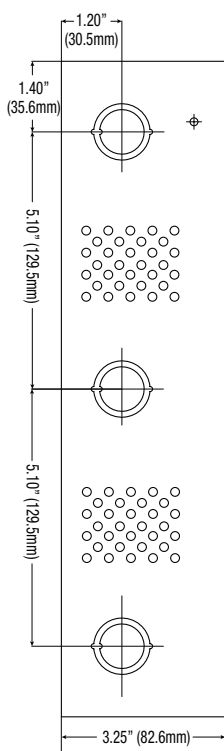
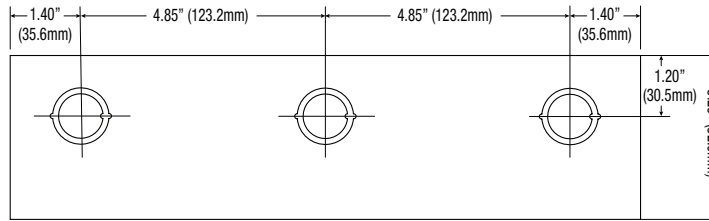
phone: +1 718.567.8181 | fax: +1 718.567.9056 | email: info@altronix.com | www.altronix.com

Dimensions and Drawing

SMP5CTX, SMP5PMCTX, SMP5PMP4(CB), SMP5PMP8(CB), SMP5PMP16(CB)

Dimensions (H x W x D approximate)

13.5" x 13" x 3.25" (342.9mm x 330.2mm x 82.55mm)

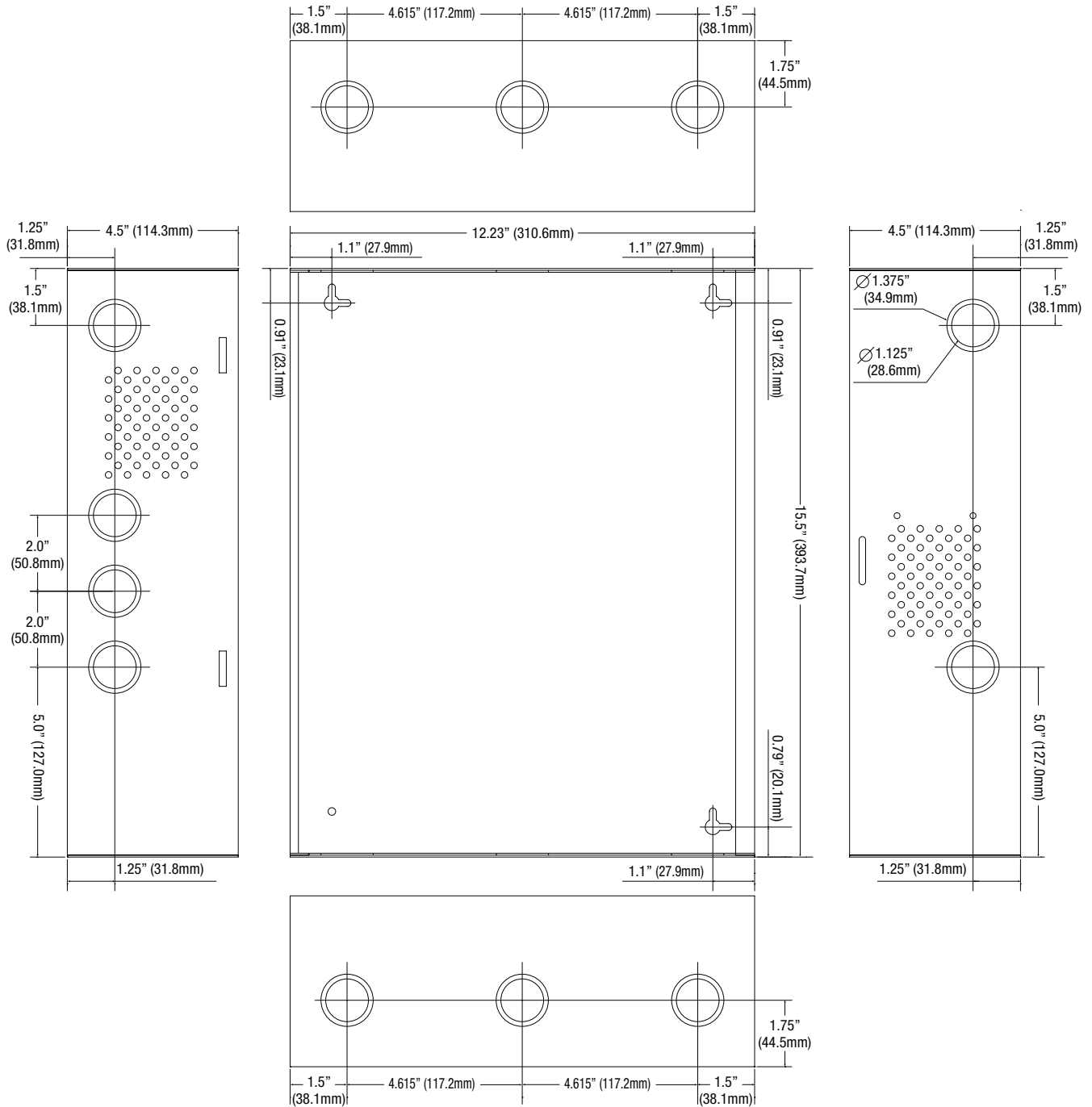


Lifetime Warranty

Dimensions and Drawing

SMP5PMCTXX Dimensions (H x W x D approximate)

15.5" x 12" x 4.5" (393.7mm x 304.8mm x 114.3mm)



Lifetime Warranty

Altronix Corporation | 140 58th St | Brooklyn, NY 11220 USA

phone: +1 718.567.8181 | fax: +1 718.567.9056 | email: info@altronix.com | www.altronix.com