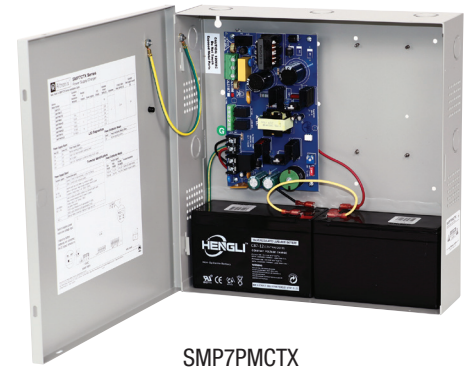


SMP7CTX Series

Power Supply/Chargers

Altronix SMP7CTX series power supply/chargers convert a 115VAC, 50/60Hz input into a single, four (4), eight (8) or sixteen (16) fuse/PTC protected outputs. Outputs are selectable for 12VDC or 24VDC with a total of 6A max.



SMP7PMCTX

Key Features

- Available with 1, 4, 8 or 16 outputs
- Fused or PTC protected outputs
- Supervision (where applicable, see Chart below):
 - AC Fail
 - Battery Fail and Low Battery
- Built-in charger for sealed lead acid or gel type batteries
- Instantaneous transfer to stand-by batteries
- Short circuit and overload protection
- AC input and DC output LEDs
- Power On/Off switch
- Lifetime Warranty

SMP7CTX series Power Supply Configuration Reference Chart

Altronix Model Number	115VAC, 60Hz Input Current (A)	12/24VDC Total Output Current (A)	Accessory Power Distribution Module(s)	Number of Outputs	Fused Outputs	PTC Outputs (auto-resettable)	Individual Output Rating (A)	Supervised	Accommodates Batteries
SMP7CTX	2.5A	6A	-	1	-	-	6A	-	Two (2) 7AH
SMP7PMCTX			-		-	Two (2) 7AH			
SMP7PMCTXXX			-		-	Two (2) 12AH			
SMP7PMP4			PD4	4	✓	-	3.5A	✓	Two (2) 7AH
SMP7PMP4CB			PD4CB		-	✓	2.5A		Two (2) 7AH
SMP7PMP8			PD8		✓	-	3.5A		Two (2) 7AH
SMP7PMP8CB			PD8CB		-	✓	2.5A		Two (2) 7AH
SMP7PMP16			PD16W	16	✓	-	3.5A		Two (2) 7AH
SMP7PMP16CB			PD16WCB		-	✓	2.5A		Two (2) 7AH

Lifetime Warranty



SMP7CTX Series

Power Supply/Chargers

Specifications

Input

Voltage 115VAC, 50/60Hz

Outputs

Voltage 12VDC or 24VDC selectable

Current 6A @ 12VDC or 24VDC continuous max.

Protection Fused 3.5A / PTC 2.5A

Other Overvoltage protection
Filtered and regulated

Battery Charging

Capacity 7AH/12VDC (1 or 2 within enclosure)
12AH/12VDC (requires larger "X" enclosure)
40AH/65AH (requires separate enclosure)

Type Sealed lead acid or gel type

Failover Upon AC loss, instantaneous

Batteries are sold separately

Supervision *(where applicable)*

AC Failure Form "C" contacts

Low Battery Form "C" contacts

Indicators (LED)

Input 115VAC is present

DC Output Powered

Physical and Environmental

Dimensions (H x W x D)

**SMP7CTX, SMP7PMCTX, SMP7PMP4(CB),
SMP7PMP8(CB), SMP7PMP16(CB):**

Enclosure:

13.5" x 13" x 3.25" (342.9mm x 330.2mm x 82.6mm)

Shipping:

15" x 13.875" x 4.75" (381mm x 352.4mm x 120.6mm)

SMP7PMCTXX:

Enclosure:

15.5" x 12" x 4.5" (393.7mm x 304.8mm x 114.3mm)

Shipping:

16.5" x 13.5" x 6" (419.1mm x 342.9mm x 152.5mm)

Weight (approx.)

Model	Product Weight	Shipping Weight
SMP7(PM)CTX	8.3 lb. (3.76 kg)	9.3 lb. (4.22 kg)
SMP7PMCTXX	9.4 lb. (4.26 kg)	10.7 lb. (4.85 kg)
SMP7PMP4(CB)	8.5 lb. (3.85 kg)	9.5 lb (4.31 kg)
SMP7PMP8(CB)	8.6 lb. (3.90 kg)	9.6 lb (4.35 kg)
SMP7PMP16(CB)	8.8 lb. (3.99 kg)	9.8 lb. (4.44 kg)

Temperature

Operating: 0°C to 49°C (32°F to 120°F)

Storage: - 20°C to 70°C (- 4°F to 158°F)

Relative Humidity 85% +/- 5%

BTU/Hr. (approx.):

12VDC: 37 BTU/Hr.

24VDC: 74 BTU/Hr.

Lifetime Warranty

Altronix Corporation | 140 58th St | Brooklyn, NY 11220 USA

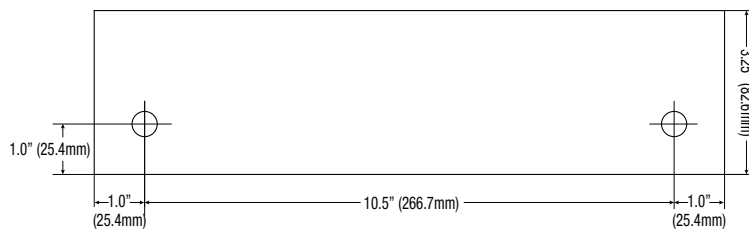
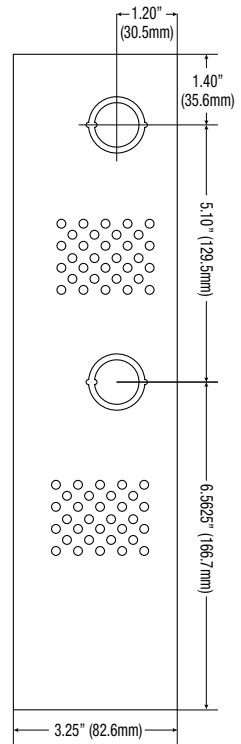
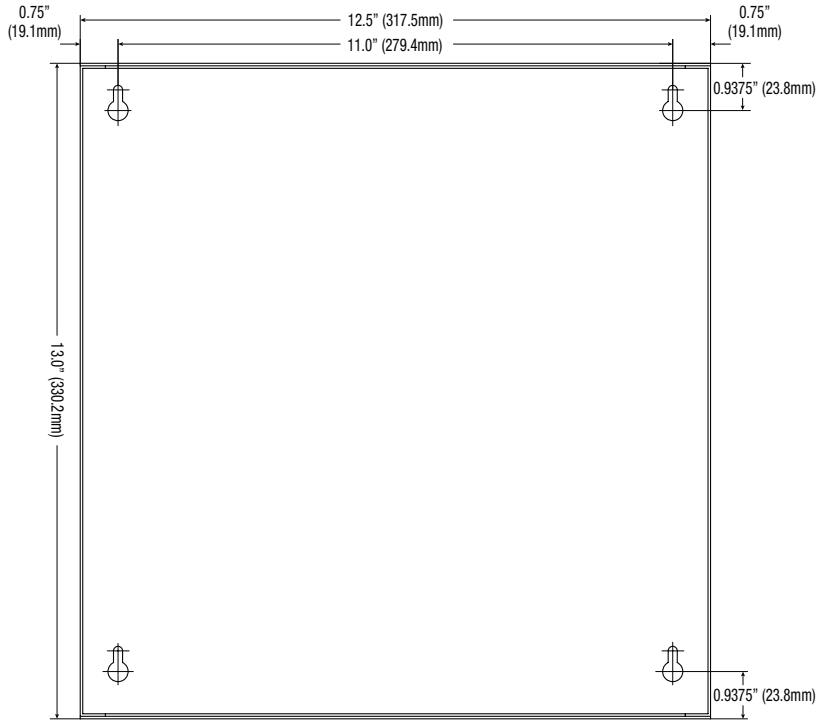
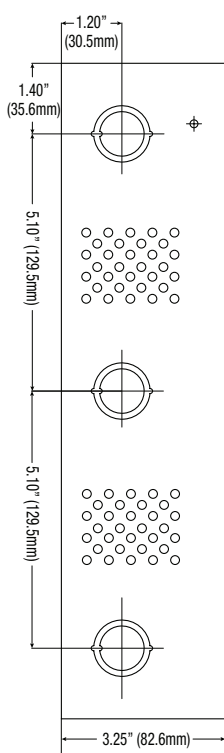
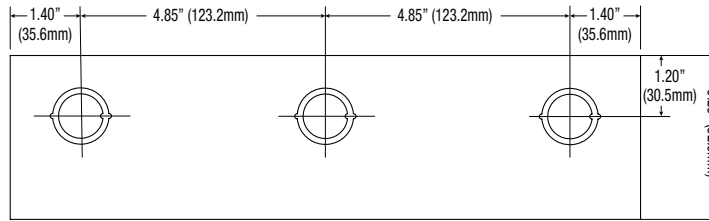
phone: +1 718.567.8181 | fax: +1 718.567.9056 | email: info@altronix.com | www.altronix.com

Dimensions and Drawing

SMP7CTX, SMP7PMCTX, SMP7PMP4(CB), SMP7PMP8(CB), SMP7PMP16(CB)

Dimensions (H x W x D approximate)

13.5" x 13" x 3.25" (342.9mm x 330.2mm x 82.55mm)



Lifetime Warranty

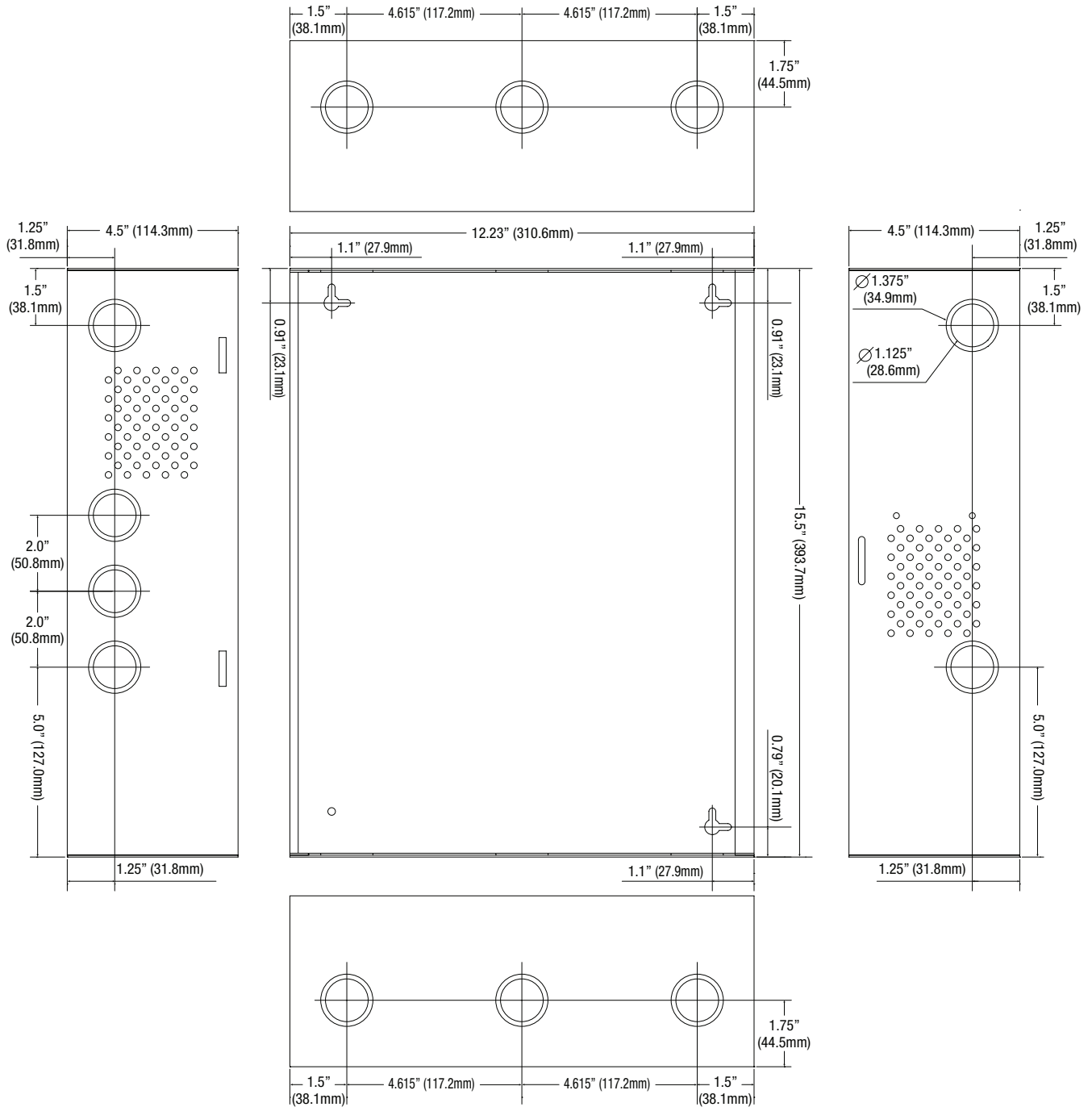
Altronix Corporation | 140 58th St | Brooklyn, NY 11220 USA

phone: +1 718.567.8181 | fax: +1 718.567.9056 | email: info@altronix.com | www.altronix.com

Dimensions and Drawing

SMP7PMCTXX Dimensions (H x W x D approximate)

15.5" x 12" x 4.5" (393.7mm x 304.8mm x 114.3mm)



Lifetime Warranty

Altronix Corporation | 140 58th St | Brooklyn, NY 11220 USA

phone: +1 718.567.8181 | fax: +1 718.567.9056 | email: info@altronix.com | www.altronix.com