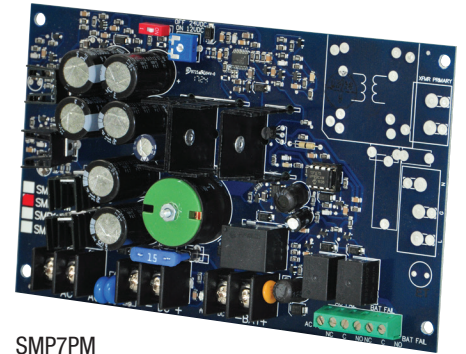


SMP7PM

Supervised Power Supply/Charger Board

Altronix SMP7PM supervised power supply/charger converts a low voltage AC input into a 12VDC or 24VDC output. This unit has a wide range of applications for access control, security and CCTV system accessories that require additional power.



SMP7PM

Specifications

Input

Voltage 28VAC

Outputs

Voltage 12VDC or 24VDC selectable

Current 6A continuous max.

Other Short circuit and thermal overload protection
Filtered and regulated

Battery Charging

Type Sealed lead acid or gel type

Failover Upon AC loss, instantaneous

Batteries are sold separately

Supervision

AC Failure Form "C" contacts

Low Battery Form "C" contacts

Indicators (LED)

Input Input voltage is present

DC Output Powered

Physical and Environmental

Dimensions (L x W x H)

Board: 7" x 4.25" x 1.25" (177.8mm x 108mm x 31.8mm)

Shipping: 8" x 6" x 5" (203.2mm x 152.4mm x 127mm)

Weight (approx.)

Product Weight: 0.45 lb. (0.20 kg)

Shipping Weight: 0.6 lb. (0.27 kg)

Temperature

Operating: 0°C to 49°C (32°F to 120°F)

Storage: -20°C to 70°C (-4°F to 158°F)

Relative Humidity 85% +/- 5%

BTU/Hr (approx.):

12VDC: 37 BTU/Hr.

24VDC: 75 BTU/Hr.

Lifetime Warranty

Altronix Corporation | 140 58th St | Brooklyn, NY 11220 USA

phone: +1 718.567.8181 | fax: +1 718.567.9056 | email: info@altronix.com | www.altronix.com

SMP7PM

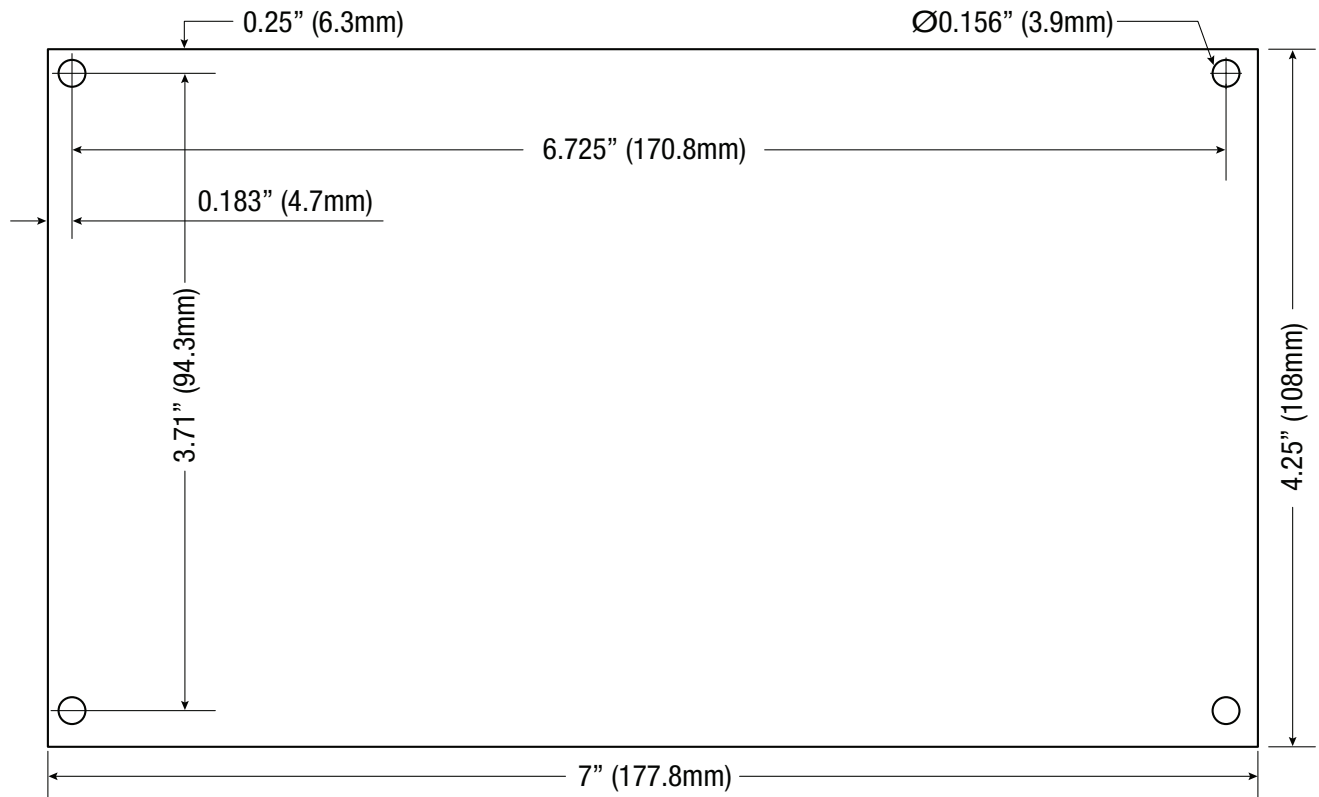
Supervised Power Supply/Charger Board

Dimensions and Drawing

Board Dimensions (L x W x H approximate)

7" x 4.25" x 1.25" (177.8mm x 108mm x 31.8mm)

Mounting Holes' Tolerance: +/- 0.04 in. (1mm)

**Lifetime Warranty**

Altronix Corporation | 140 58th St | Brooklyn, NY 11220 USA

phone: +1 718.567.8181 | fax: +1 718.567.9056 | email: info@altronix.com | www.altronix.com