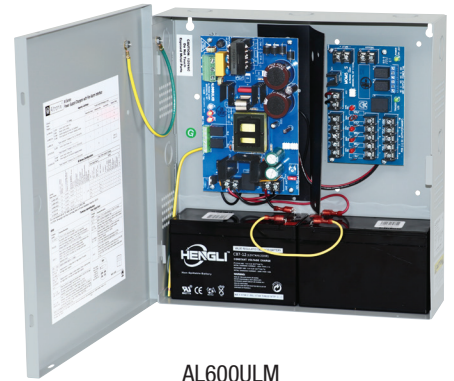


M Series

Multi-Output Power Supply/Chargers

Altronix M series access control power supply/chargers are specifically designed for use with access control systems and accessories. These units convert a 115VAC, 60Hz input into five (5) individually protected 12VDC or 24VDC outputs (see specifications). Each output will route power to a variety of access control hardware devices including Mag Locks, Electric Strikes, Magnetic Door Holders, etc. These outputs will operate in both Fail-Safe and Fail-Secure modes. Controlled trigger input is achieved through normally open [NO] or normally closed [NC] supervised input or the polarity reversal from an FACP (Fire Alarm Control Panel). A form "C" dry output relay enables HVAC Shutdown, Elevator Recall or may be used to trigger auxiliary devices.



AL600ULM

Key Features

- Fire Alarm Panel or Access Control System trigger inputs. [NO] or [NC] supervised trigger input and polarity reversal trigger input (4mA draw from FACP)
- Five (5) individual power-limited Class 2 outputs (auto-resettable)
- Filtered and electronically regulated outputs
- Thermal and short circuit protection with auto reset.
- Overload protection
- Output relay energizes when unit is triggered (form "C" contact rated 1A @ 28VDC)
- Supervision:
 - AC Fail
 - Battery Fail and Battery Presence
- Built-in charger for sealed lead acid or gel type batteries
- Instantaneous transfer to stand-by batteries
- Power and input trigger LEDs
- DC output LED indicator
- LEDs indicate condition of power outputs
- UL Listed in the U.S. and Canada
- CSFM Approved
- Lifetime Warranty
- All units are available in grey or red enclosure

M Series Power Supply Configuration Reference Chart

Altronix Model Number	115VAC, 60Hz Input Current Draw (A)	Power Supply Board Input Fuse Rating	Power Supply Board Battery Fuse Rating	12VDC Total Output Current (A)	24VDC Total Output Current (A)	Class 2 Rated Power-Limited PTC Outputs (auto-resettable)	Accommodates Batteries
AL300ULM	3.5A	5A/250V	15A/32V	2.5	2.5	5	Two (2) 7AH
AL300ULMX							Two (2) 12AH
AL400ULM				Two (2) 7AH			
AL400ULMX			Two (2) 12AH				
AL600ULM			—	6	6		Two (2) 7AH
AL600ULMX			—	6	6		Two (2) 12AH
AL1012ULM	2.6A	15A/32V	15A/32V	10	—		One (1) 12AH
AL1024ULM	4.2A			—	10		Two (2) 12AH

Lifetime Warranty



M Series

Multi-Output Power Supply/Chargers

Specifications

Input

Voltage 115VAC, 60Hz
 Input Fuse Varies, see Reference Chart

Outputs

Voltage 12VDC or 24VDC, see Reference Chart
 Current Varies, see Reference Chart
 Protection PTC 2.5A
 Other Overvoltage protection
 Filtered and regulated outputs

Battery Charging

Capacity 7AH/12VDC (AL300ULM, AL400ULM, AL600ULM)
 12AH/12VDC (AL300ULMX, AL400ULMX, AL600ULMX, AL1012ULM, AL1024ULM)
 Type Sealed lead acid or gel type
 Failover Upon AC loss, instantaneous
 Batteries are sold separately

Supervision

AC Failure Form "C" contacts
 Battery Form "C" contacts

Indicators (LED)

Input 115VAC is present
 DC Output Powered
 Battery Discharged or not connected
 Power and Input Individual LEDs indicate outputs are triggered (relays energized)

Agency Listings

All Models:
 UL:
 UL294 Access Control System Units
 cUL:
 CSA C22.2 No.205 Signal Equipment

All Models in Series, Except AL1012ULM:
 UL1481 Fire Protective Signaling Systems
 CSFM California State Fire Marshall Approved

AL300ULM, AL400ULM, AL600ULM Only:
 UL603 Burglar Alarms Systems
 UL1069 Hospital Signaling and Nurse Call Equipment

Physical and Environmental

Dimensions (H x W x D)

AL300ULM, AL400ULM, AL600ULM:

Enclosure: 13.5" x 13" x 3.25" (342.9mm x 330.2mm x 82.6mm)
 Shipping: 15" x 13.875" x 4.75" (381mm x 352.4mm x 120.6mm)

AL300ULMX, AL400ULMX, AL600ULMX, AL1012ULM, AL1024ULM:

Enclosure: 15.5" x 12" x 4.5" (393.7mm x 304.8mm x 114.3mm)
 Shipping: 16.5" x 13.5" x 6" (419.1mm x 342.9mm x 152.5mm)

Weight (approx.)

Model	Product Weight	Shipping Weight
AL300ULM	7.6 lb. (3.45 kg)	8.6 lb. (3.9 kg)
AL300ULMX	9.4 lb. (4.26 kg)	10.4 lb. (4.72 kg)
AL400ULM	7.6 lb. (3.45 kg)	8.6 lb. (3.9 kg)
AL400ULMX	9.4 lb. (4.26 kg)	10.4 lb. (4.72 kg)
AL600ULM	7.9 lb. (3.58 kg)	8.9 lb. (4.04 kg)
AL600ULMX	9.7 lb. (4.4 kg)	11.2 lb. (5.1 kg)
AL1012ULM	8.95 lb. (4.06 kg)	10.25 lb. (4.65 kg)
AL1024ULM	10.8 lb. (4.90 kg)	11.8 lb. (5.35 kg)

Temperature

Operating: 0°C to 49°C (32°F to 120°F)
 Storage: -20°C to 70°C (-4°F to 158°F)

Relative Humidity 85% +/- 5%

BTU/Hr. (approx.)

Model	12VDC	24VDC
AL300ULM(X)	15	31
AL400ULM(X)	25	37
AL600ULM(X)	37	74
AL1012ULM	61	N/A
AL1024ULM	N/A	123

Lifetime Warranty

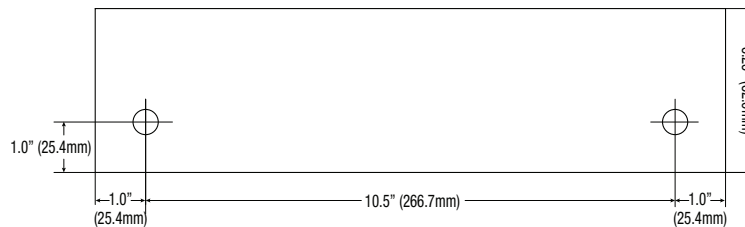
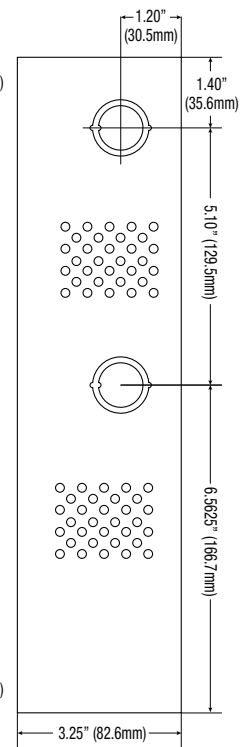
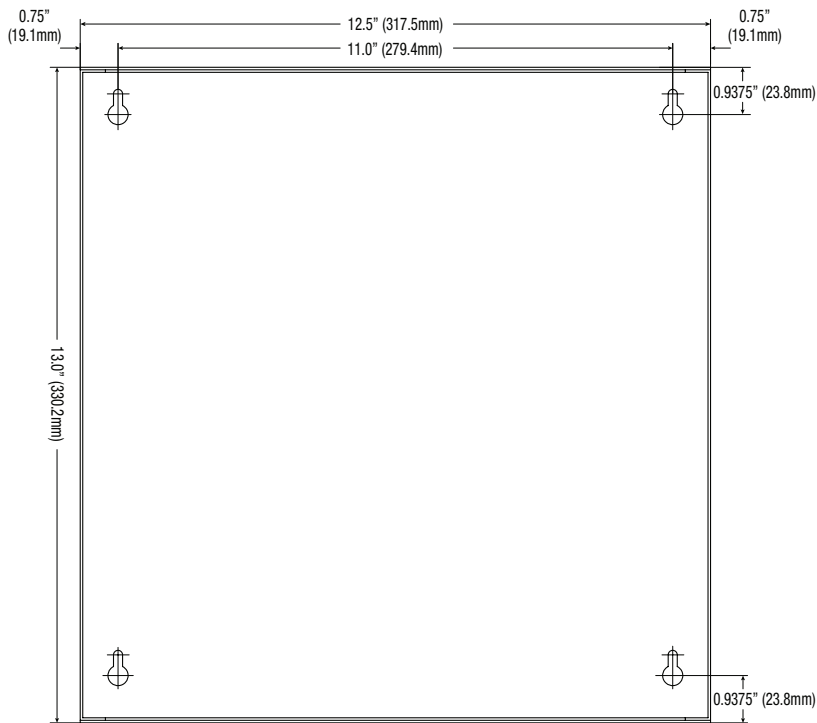
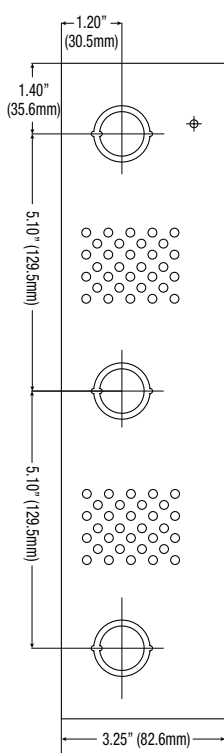
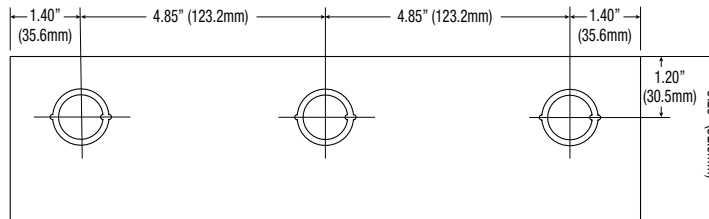
M Series

Multi-Output Power Supply/Chargers

Dimensions and Drawing

AL300ULM, AL400ULM, AL600ULM Dimensions (H x W x D approximate)

13.5" x 13" x 3.25" (342.9mm x 330.2mm x 82.55mm)



Lifetime Warranty

Altronix Corporation | 140 58th St | Brooklyn, NY 11220 USA

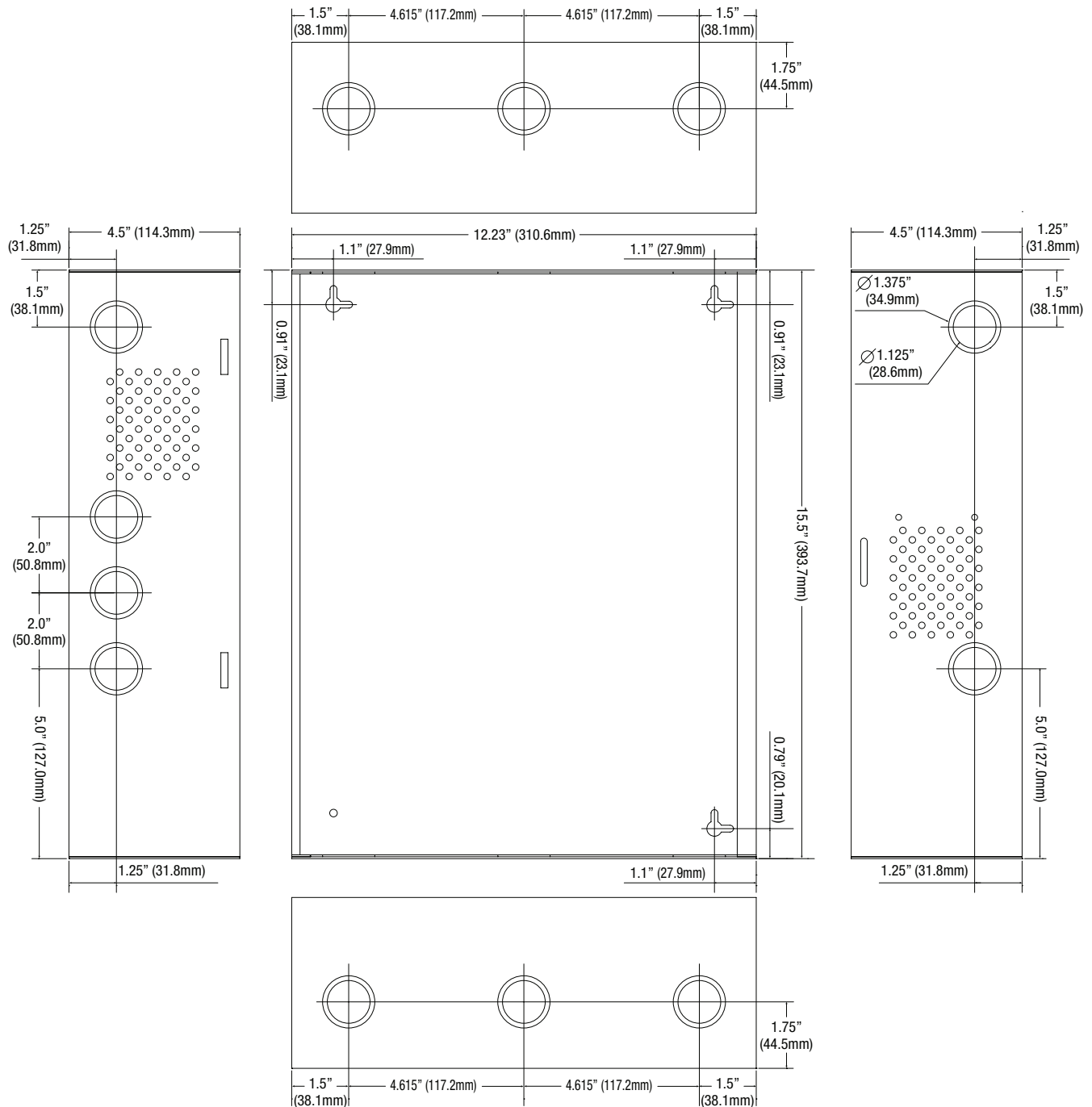
phone: +1 718.567.8181 | fax: +1 718.567.9056 | email: info@altronix.com | www.altronix.com

M Series

Multi-Output Power Supply/Chargers

Dimensions and Drawing

AL300ULMX, AL400ULMX, AL600ULMX, AL1012ULM, AL1024ULM Dimensions (H x W x D approximate)
 15.5" x 12" x 4.5" (393.7mm x 304.8mm x 114.3mm)



Lifetime Warranty