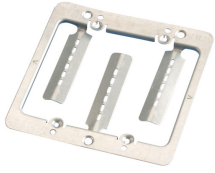
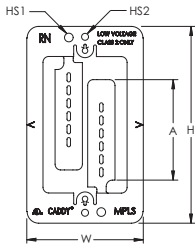


# Low Voltage Mounting Plate with Screws – MPLS2



- Provides positive support with locking screws
- Makes wire "fishing" easier
- Install with a drywall saw and screwdriver
- Eliminates the need for an electrical box when installing low voltage Class 2 wiring



Part Number	MPLS2
Material	Steel
Finish	Plain
Gang	2
Drywall Thickness	1/2" – 1 1/4"
Height (H)	4 1/4"
Width (W)	4 1/4"
A	2 3/8"
Hole Size 1 (HS1)	0.187"
Hole Size 2 (HS2)	0.15"
Certifications	cULus
Standard Packaging Quantity	100 pc
UPC	78285648670

For low voltage Class 2 use only.

UL, UR, cUL, cUR, cULus and cURus are registered certification marks of UL LLC.

#### WARNING

Pentair products shall be installed and used only as indicated in Pentair's product instruction sheets and training materials. Instruction sheets are available at [erico.pentair.com](http://erico.pentair.com) and from your Pentair customer service representative. Improper installation, misuse, misapplication or other failure to completely follow Pentair's instructions and warnings may cause product malfunction, property damage, serious bodily injury and death and/or void your warranty.

© 2017 Pentair All rights reserved

Pentair, CADDY, CADWELD, CRITEC, ERICO, ERIFLEX, ERITECH and LENTON are owned by Pentair or its global affiliates.

All other trademarks are the property of their respective owners. Pentair reserves the right to change specifications without prior notice.

