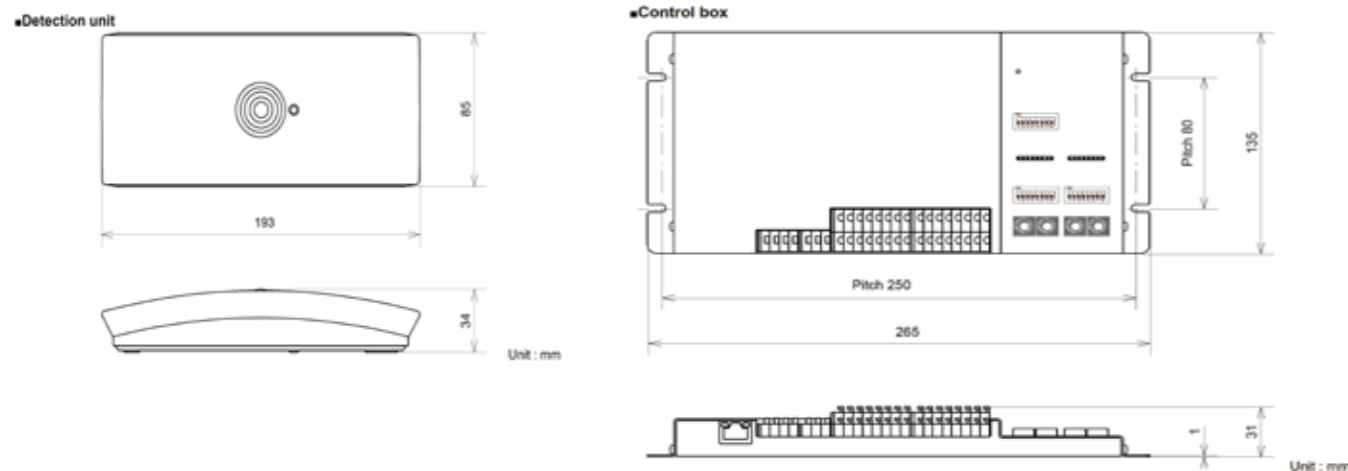


Dimensions



Specifications

■Detection unit / Control box

Item	Specifications	Remark	
Detection Method	Vector Focusing Method		
Detection Accuracy	> 95% (by own criteria)		
Supply Voltage	Power over Ethernet IEEE 802.3 af		
Warm-up time	Approx. 45 sec.		
Power Consumption	Control box	10 W max.	
	Detection unit	10 W max.	
Indicator	Control box	Green	Power, Authorization, Normal entry (lit)
		Red	Tailgating (lit) / Multiple detections (blinking)
		Green / Red	Warm-up (lit) / Trouble (blinking) Communication trouble (alternative blinking)
	Detection unit	Green	Power (lit) / Normal entry (blinking)
		Red	Tailgating (lit) / Multiple detections (blinking)
		Orange	Warm-up (lit) / Trouble (blinking)
Dimensions	Control box	265 x 135 x 31 mm (W × H × D)	
	Detection unit	193 x 85 x 34 mm (W × H × D)	
Weight	Control box	800 g	
	Detection unit	220 g	
Operating Temperature	0 to 50° C		
Operating Humidity	< 80% RH	only under no condensation	
Operating Illuminance	100 to 20,000 lux *1	only the outline of an object is shown	
Applicable Door Type	Manual Swing Door/Automatic Slide Door		
Installation location	Control box	Wall / stationary	Interior only
	Detection unit	Ceiling	Interior only
Mounting Height	Detection unit	2.5 to 4.0 m *2	It may be limited by environmental conditions.
LAN wiring	CAT5e or larger	100 m max. in length	
Ethernet	100Base-T(X)	Protocol : TCP/UDP(IPv4), ARP, ICMP or HTTP	
Input terminal *3	Authorization	N.O./N.C. no voltage	
	Door open	Wiegand	26/37bit
	Door locked		Use supplied magnet switch when disable to get
	Disable output *4	N.O./N.C. no voltage	Disable Tailgating①,② and Multiple detections
	Output reset		Stop the output of Tailgating ① and ②
Output terminal *3	Tailgating①	MOS FET relay N.O./N.C. no voltage 30 V DC 0.2 A or less (Resistibility load)	Variable timer 0.2 to infinity
	Tailgating②		Pulse output for every entry
	Normal entry		One shot/Timer switching
	Number of pass		Pulse output for authorization
	Unlock command		Continuous output during multiple detections *5
	Authorization number		Output when disable to detect
	Multiple detections		
Error			

*1 OV-102 always requires 100 lux or more.

*2 Maximum width of door opening is 2 m when mounting at 2.5 m high.

*3 Input/output relays can be selected N.O./N.C. by the dipswitch.

*4 "Disable output" is recommended to use for an entrance with carriage or luggage. They may make a false detection.

*5 Multiple detections must be ON by the dipswitch settings.



OPTEX INC. (U.S.)
URL: http://www.optexamerica.com

OPTEX DO BRASIL LTDA. (Brazil)
URL: http://www.optex.net/br/ies/sec

OPTEX (EUROPE) LTD. / EMEA HQ (U.K.)
URL: http://www.optex-europe.com

OPTEX TECHNOLOGIES B.V. (The Netherlands)
URL: http://www.optex.eu

OPTEX SECURITY SAS (France)
URL: http://www.optex-security.com

OPTEX SECURITY Sp.z o.o. (Poland)
URL: http://www.optex.com.pl

OPTEX PINNACLE INDIA, PVT., LTD. (India)
URL: http://www.optex.net/in/en/sec

OPTEX KOREA CO., LTD. (Korea)
URL: http://www.optexkorea.com

OPTEX (DONGGUAN) CO., LTD. SHANGHAI OFFICE (China)
URL: http://www.optexchina.com

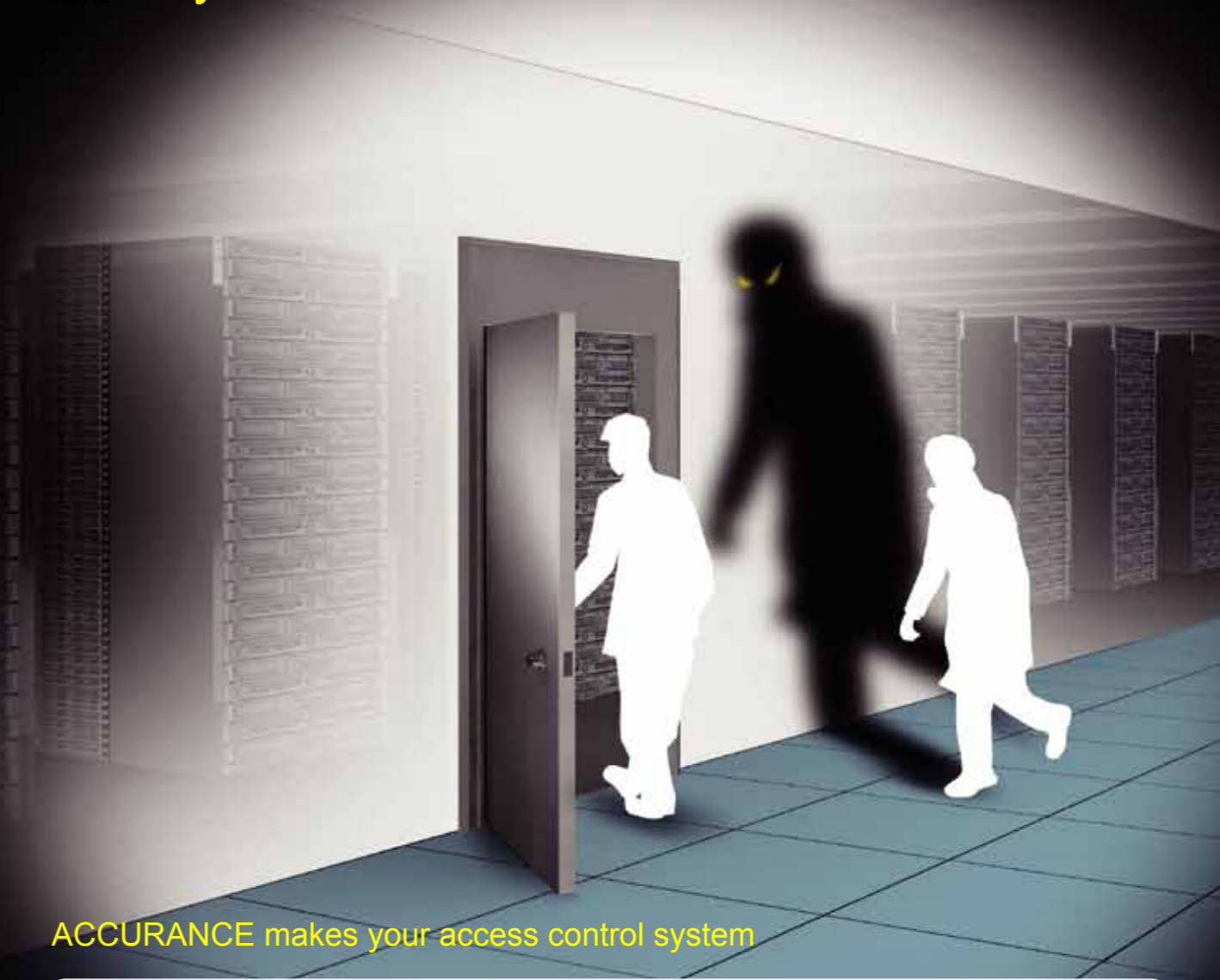
OPTEX (Thailand) CO., LTD. (Thailand)
URL: http://www.optex.net/th/th



Anti-tailgating system



Make your access more sure..

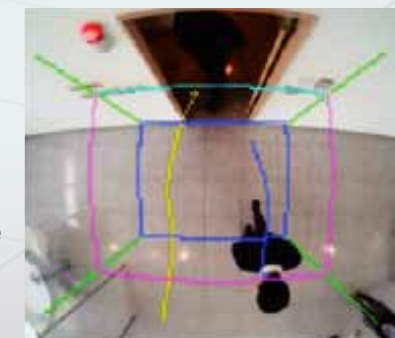


Unique algorithm for anti-tailgating detection

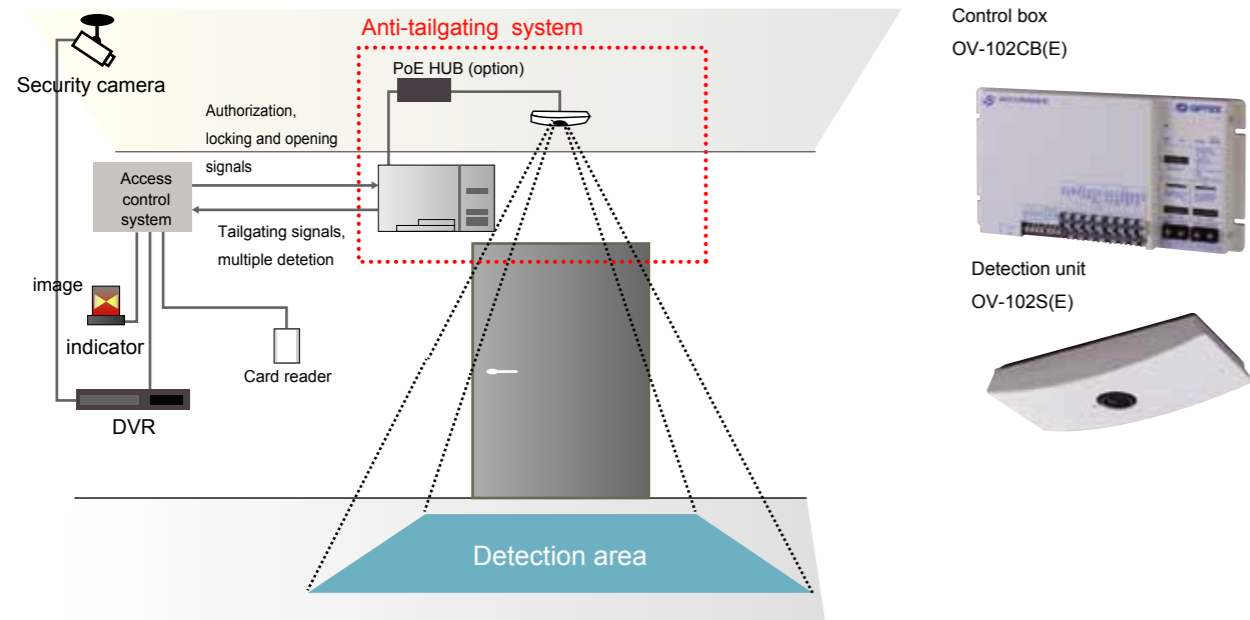
[Vector focal method]

The Accurance OV-102 grasps and tracks a shape of human sterically by a unique image sensing technology.

The system can recognize complicated movement and the number of people at high rate and accuracy.



System configuration

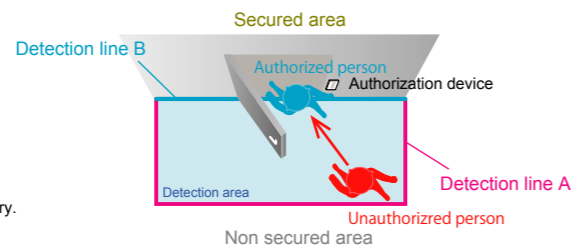


Basic scenario

Tailgating entry

Generate output when unauthorized person follows authorized person and pass **detection line A** (pink line) -> **detection line B** (blue line) in order.

Output
Tailgating

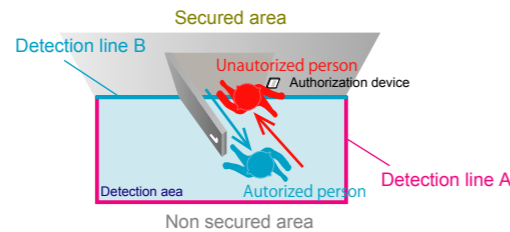


Another set of the system is required for two way entry.

Cross entry

Generate output for unauthorized person entry when authorized person exits.

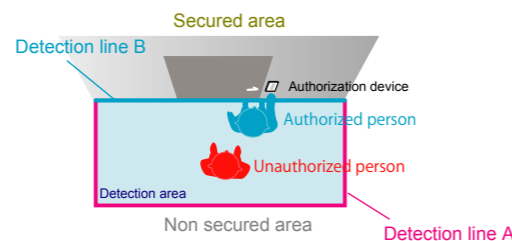
Output
Tailgating



Multiple detection

Generate multiple detection output when multiple people stay in the detection area.

Output
Multiple detection



Features

Unique and various functions

- Door cancel function
Ignore door movement on installation side of detection unit.
- Workability
Install on existing door
- Detection area adjustability
Detection area can be adjusted after installation of detection unit.
- Sensitivity adjustability
Sensitivity can be adjusted after installation.

System scalability

- WEB browser setting
Setting can be adjusted by WEB browser through LAN. (No special set - up software required)

Performance for ambient light

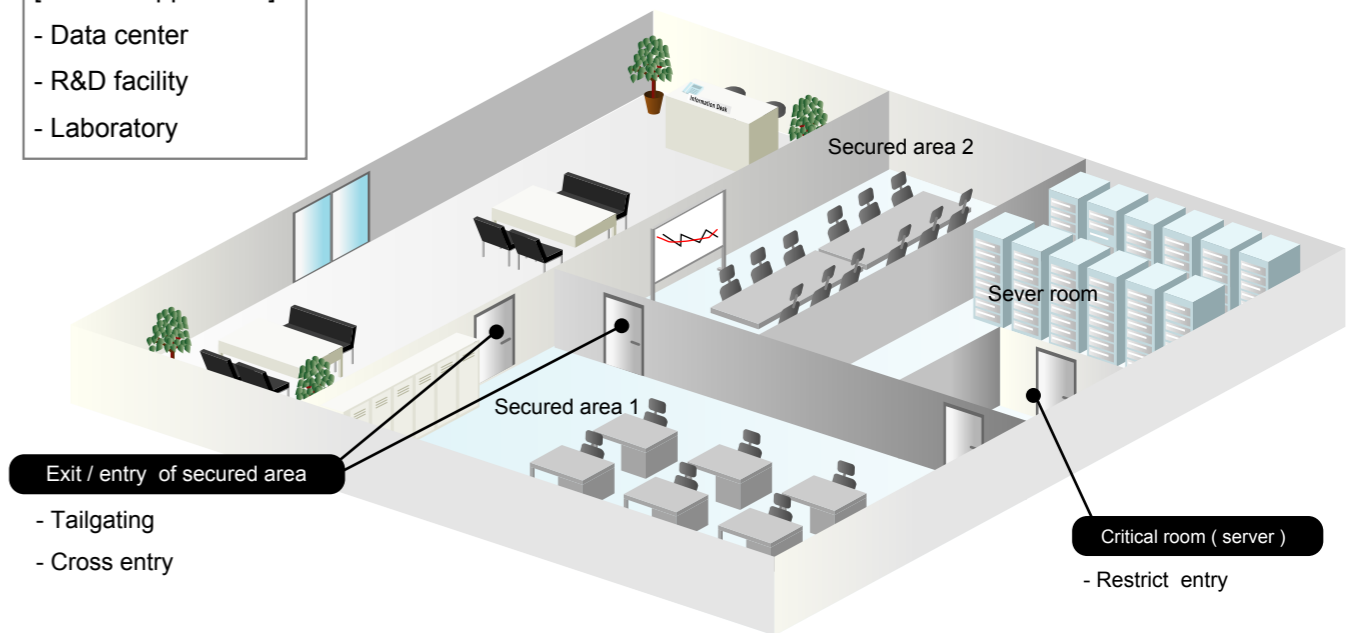
- Stable performance for Illuminance change
Operating illuminance.10 to 20,000 lux

Versatile operation by security level or application

Accurance OV-102 fits various applications by security level of area or zoning.

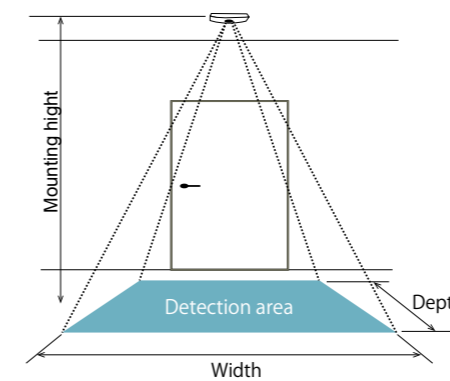
[Case of application]

- Data center
- R&D facility
- Laboratory



- Tailgating
- Cross entry

Detection area chart



unit : mm

Mounting height	Depth	Width
2400	1200	1900
2500	1400	2000
2600	1600	2200
2700	1700	2300
2800	1900	2400
2900	2100	2500
3000	2200	2700
3500	3100	3300
4000	4000	4000