

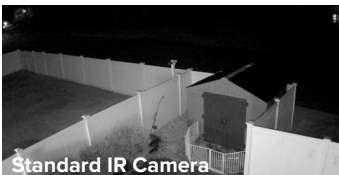
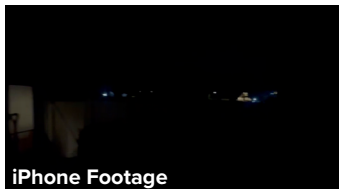
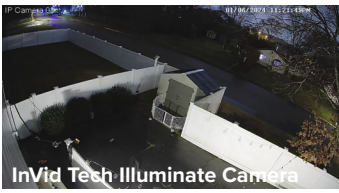


The camera does have white lights. They are off by default because they are not needed. InVid Tech Illuminate provides a 24/7 Color Picture.

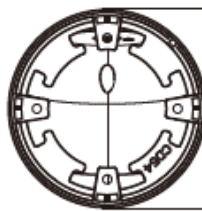
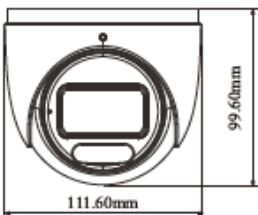
PAR-P4TXIRL28NH-AI

4 Megapixel IP Plug & Play, Outdoor Turret, 24/7 Full-Color Day AND Night, True AI, Fixed lens, Audio Input: Built-in Mic, Audio Output, SD Card Slot, 12VDC/PoE

- True AI Human and Vehicle Classification for Line Crossing and Intrusion Detection
- 24/7 Full-Color Day & Night with InVid Tech Illuminate
- 4 Megapixel Resolution
- Fixed Lens
- H.265+ / H.265 / H.264+ / H.264
- 30 FPS Recording and Live
- SD Slot For Local Storage: Up to 1 TB
- Audio Input: Built-in Mic
- Audio Output
- IP67 Weatherproof
- 12VDC/PoE Operation
- ONVIF
- Free iOS & Android Apps for Smart Phones & Tablets
- Free Central Management Software (CMS)
- Free MAC Client
- NDAA Compliant



Here is an example of some real camera footage from the InVid Tech Illuminate Series. You can find a video of this on our website. This is real footage with very minimal light. Notice all the colors! The iPhone footage shows how dark the area was. And you can see the difference of a standard IR camera vs InVid Tech Illuminate!



Ordering Information
PAR-P4TXIRL28NH-AI: 4 Megapixel Turret, 2.8mm Fixed Lens

Camera	PAR-P4TXIRL28NH-AI
Image Size	1 / 1.79 "CMOS
Image Sensor	2688 × 1520
Electronic Shutter	Auto or manual mode; manual mode: 1 / 2s ~ 1 / 100000 s
Iris Type	Fixed Iris
Min. Illumination	0.0003 lux @F1.0, AGC ON; 0 lux with illumination on
S/N Ratio	≥50dB
Lens	2.8 mm@F1.0, H.FoV: 112°; V.FoV:61°; D.FoV:133°
Focus	Fixed
Lens Mount	M12
Wide Dynamic Range	Digital WDR
BLC	Yes
HLC	Yes
Defog	Yes
Digital NR	3D DNR
Angle Adjustment	Pan: 0°~360°; Tilt:0°~80°; Rotation: 0°~360°
Image	
Video Compression	Main stream: H.265+/ H.265 / H.264+ / H.264 Sub stream/Third stream: H.265+/ H.265 / H.264+ / H.264/ MJPEG Fourth stream/Fifth stream: H.265 / H.264 / MJPEG
H.264 Compression Standard	Baseline Profile/Main Profile/High Profile
Resolution	4MP (2688×1520),2K (2560×1440), 3MP(2304×1296),1080P (1920×1080), 720P (1280×720), D1, VGA (640 ×480), CIF, 480×240
Main Stream	4MP/2K/3MP/1080P(60Hz : 1 ~ 30fps; 50Hz: 1~25fps)
Sub Stream	1080P/720P/D1 (60Hz : 1 ~ 30fps; 50Hz: 1~25fps)
Third Stream	720P/D1/VGA/CIF/480×240 (60Hz : 1 ~ 30fps; 50Hz: 1~25fps)
Fourth Stream	D1/VGA/CIF/480×240 (60Hz : 1 ~ 30fps; 50Hz: 1~25fps)
Fifth Stream	D1/VGA/CIF/480×240 (60Hz : 1 ~ 30fps; 50Hz: 1~25fps)
Bit Rate	64 Kbps ~ 8 Mbps
Bit Rate Type	VBR / CBR
Audio Compression	G711A / U
Image Settings	ROI, Saturation, Brightness, Hue, Contrast,Wide Dynamic, Sharpness, Image Flip, Image Mirror, NR, etc. adjustable through client software or web browser
ROI	Each ROI to be configured separately
Interfaces	
Network	RJ 45
Video Output	No
Audio	1CH audio input; 1CH audio output; 1CH built-in microphone
Storage	Built-in micro SD card slot; up to 1 TB
Reset	Yes
Alarm	1CH alarm input; 1CH alarm output
Intelligent Analytics	
Smart Event	Line crossing, region intrusion/entrance/exiting (human/vehicle classification), abandoned/ missing object detection, crowd density detection
Statistics	Target counting by line, heat map
Exception Detection	Scene change, video blur and abnormal color detection
Face Detection	Face detection and face capture
Video Metadata	Simultaneously captures human body, motor vehicle and non-motor vehicle and extracts 13 human features, 5 motor vehicle features and 1 non-motor vehicle feature
DORI Distance	
DORI Distance	Lens Detect (ft) Observe (ft) Recognize (ft) Identify (ft) 2.8mm 170 (52m) 68 (21m) 33 (10m) 17 (5m)
Functions	
Remote Monitoring	Web Browser, Paramont DVR/NVR, Paramont CMS AI, Paramont CMS App
Web Browser	IE11(plugin-in required)/Chrome 92.0+/Edge 92.0+/Firefox 91.0+/Safari 13.1+
Online Connection	Support simultaneous monitoring for up to 3 users; Support multi-stream real time transmission
Network Protocol	UDP, IPv4, IPv6, DHCP, NTP, RTSP, RTP, RTCP, RTMP, FTP, PPPoE, DDNS, SMTP, SNMP, HTTP, 802.1x, UPnP, HTTPS, HTTP POST, QoS
Interface Protocol	ONVIF
Storage	Network remote storage; micro SD card storage
Smart Alarm	Motion detection, sensor alarm, SD card error, SD card full, IP address conflict, cable disconnection
General Function	Watermark, video mask, heartbeat, image distortion correction, corridor pattern
Security	Video encryption, firmware encryption, HTTPS encryption, configuration encryption, illegal login lock, IP address filtering, 802.1x authentication, basic and digest authentication for HTTP
PoE	Yes , IEEE802.3af
White Light Range	Up to 98' (30 m) (Off by Default. Optional Use. But NOT Needed.)
Ingress Protection	IP 67
Others	
Power Supply	DC12V/PoE
Power Consumption	< 5.5W
Storage Conditions	-22°F~149°F (- 30 °C ~ 65°C), Humidity: less than 95 % (non-condensing)
Operating Conditions	-22°F~140°F (- 30 °C ~ 60 °C), Humidity: less than 95 % (non-condensing)
Dimensions	Φ 4.4 x 3.9 in (Φ 111.6 × 99.6 mm)
Weight (net)	Approx. 1.4lbs (0.623KG)
Installation	Ceiling mounting; Wall mounting
Certificate	CE, FCC
Environmental Protection	Directive EU RoHS, WEEE(2012/19/EU) , directive 94/62/EC and REACH(EC1907/2006)