

Fixed Temperature Sensors



**T8000/T8005
T8050/T8070**



T8060

Environmental Sensors for Security and Control Applications

- General temperature monitoring
- Low cost protection
- Easy to install
- Closed above activation temperature

T8000 0°C/32°F - For notification of a freeze

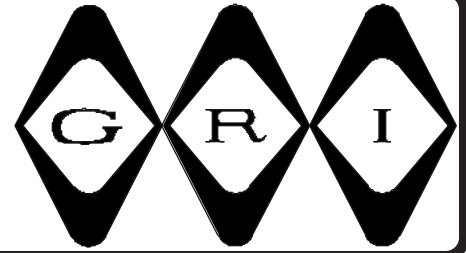
T8005 5°C/41°F - For use with refrigerators, walk-in coolers.

T8050 10°C/50°F - For use in second homes, cabins and unoccupied buildings.

T8060 60°C/140°F - For monitoring high temperature requirements.

T8070 21°C/70°F - For use in computer rooms.

FIXED TEMPERATURE SENSORS



T8000 SERIES

Environmental Sensor for Security and Control Applications

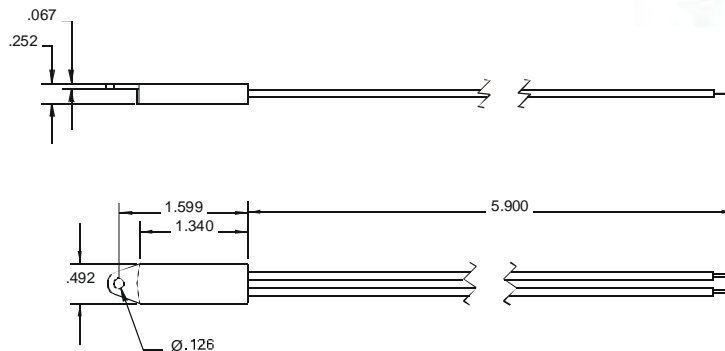
- ◆ General Temperature Monitoring
- ◆ Low Cost Protection
- ◆ Easy To Install
- ◆ Small, Unobtrusive Surface Mount
- ◆ Fixed Temperature Sensors; 32°F, 41°F, 50°F, 70°F and 140°F



T8000/T8005/T8050/T8070



T8060



For those property owners who are concerned about frozen water pipes bursting, fluctuating greenhouse temperatures, vacation homes in cold climates or any unattended structure where a fixed temperature is crucial, the GRI T8000 series of fixed temperature sensors provides the proper protection. The T8000 series can be used in computer rooms, walk-in coolers, and similar places where the monitoring of temperature is needed.

Prior to connecting the temperature sensor determine the monitoring application. When the ambient temperature goes below the trip temperature limit, the contacts will open. Is the temperature above or below the trip temperature? Are you monitoring a cold environment to warn you of a heating condition or are you monitoring a warm environment that is critical of colder temperatures? Now make the appropriate connection to your alarm control panel as an open or closed loop for detections. Here's why.

The sensors are pre-set with a temperature limit. When the ambient temperature goes below the trip temperature limit, the switch configuration will change. The T8070 is designed for network operation center rooms, main computer distribution facilities, head ends for CCTV and file server rooms.

Maximum General Specifications:

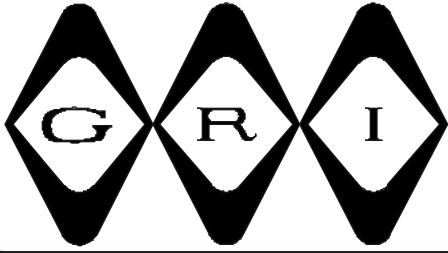
CONTACT RATING	VOLTAGE RATING MAX (VDC)
100 mA	48

WARRANTY: 6 month warranty against workmanship, material and factory defects.

GEORGE RISK INDUSTRIES, INC.
GR.I. PLAZA
KIMBALL, NE 69145



TOLL-FREE 1-800-445-5218
TOLL-FREE 1-800-523-1227
(308) 235-4645 • FAX (308) 235-3561
E-MAIL: grisales@megavision.com
WEB SITE: www.grisk.com

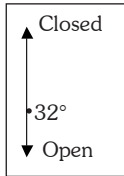


FIXED TEMPERATURE SENSORS

GRI recommends that you NOT use double faced tape.

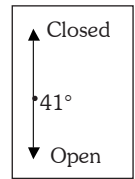
T8000 Electrical Specifications 0° C / 32° F

Contact Arrangement	SPST
Switch Action	CLOSED above Activation Temperature
Maximum Temperature	115° C / 239° F
Activation Temperature	
Nom.	0° C (32.0° F)
Max.	4° C (39° F)
Min.	-4° C (25° F)
Max. Reset Temperature	
Max.	4° C (39° F)
Min.	0° C (32.0° F)
Tolerance	+/- 4° C (+/- 7.2° F)
Lead Lengths	6" #20AWG Leads



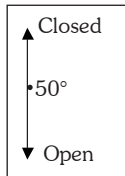
T8005 Electrical Specifications 5° C / 41° F

Contact Arrangement	SPST
Switch Action	CLOSED above Activation Temperature
Maximum Temperature	64° C / 147° F
Activation Temperature	
Nom.	5° C (41.0° F)
Max.	9° C (48° F)
Min.	1° C (34° F)
Max. Reset Temperature	
Max.	8° C (46.4° F)
Min.	5° C (41° F)
Tolerance	+/- 4° C (+/- 7.2° F)
Lead Lengths	6" #20 AWG Leads



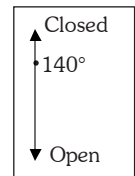
T8050 Electrical Specifications 10° C / 50° F

Contact Arrangement	SPST
Switch Action	CLOSED above Activation Temperature
Maximum Temperature	70° C / 158° F
Activation Temperature	
Nom.	10° C (50.0° F)
Max.	14° C (57° F)
Min.	6° C (43° F)
Max. Reset Temperature	
Max.	14° C (57° F)
Min.	10° C (50° F)
Tolerance	+/- 4° C (+/- 7.2° F)
Lead Lengths	6" #20 AWG Leads



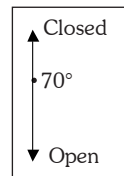
T8060 Electrical Specifications 60° C / 140° F

Contact Arrangement	SPST
Switch Action	CLOSED above Activation Temperature
Maximum Temperature	115° C / 239° F
Activation Temperature	
Nom.	60° C (140.0° F)
Max.	64° C (147° F)
Min.	56° C (133° F)
Max. Reset Temperature	
Max.	64° C (147° F)
Min.	60° C (140.0° F)
Tolerance	+/- 4° C (+/- 7.2° F)
Lead Lengths	36" Two Conductor Jacketed Leads



T8070 Electrical Specifications 21° C / 70° F

Contact Arrangement	SPST
Switch Action	CLOSED above Activation Temperature
Maximum Temperature	81° C / 117° F
Activation Temperature	
Nom.	21° C (70.0° F)
Max.	24° C (75° F)
Min.	18° C (65° F)
Max. Reset Temperature	
Max.	24° C (75° F)
Min.	21° C (70° F)
Tolerance	+/- 3° C (+/- 6° F)
Lead Lengths	6" #20 AWG Leads



GEORGE RISK INDUSTRIES, INC.
G.R.I. PLAZA
KIMBALL, NE 69145



MADE IN U.S.A.

TOLL-FREE 1-800-445-5218
TOLL-FREE 1-800-523-1227
(308) 235-4645
FAX (308) 235-3561

E-MAIL: grisales@megavision.com
WEB SITE: www.grisk.com