

The convenience of wireless with the **SECURITY OF HARDWIRED**

TWO-WAY

WIRELESS



**SECURE, RELIABLE, AND
INSTALLER FRIENDLY**

ELK's Two-Way Wireless for E27 & M1 Controls features encrypted transmissions, frequency hopping and jamming detection to provide increased immunity to hacking. Signal acknowledgment ensures reliability and stops repeat transmissions, saving battery life. Bi-color LEDs confirm signals have been received, saving installation steps and time.



Know if an alarm has been activated before entering with on-demand status inquiry and LED indicator



Meet new fire codes with Sound All™ Smoke Detectors featuring wirelessly activated synchronized sounders



Eliminate trips up the ladder and simplify motion detector testing with keypad activated walk test mode and test confirmation with a bright white LED

Carbon Monoxide Alarm



ELK-6051

Proven, high reliability electro-chemical carbon monoxide sensor with secure, reliable wireless communications

- Loud built-in sounder, 85dB(A) at 3 meters
- Operates from two readily available and easy to replace AAA batteries
- Diagnostic smartphone app simplifies field testing
- Sensor has 10 year life

Sound All™ Smoke Detector



ELK-6052

In the event of a fire alarm, the built-in sounders of all enrolled smoke detectors are activated, providing a wirelessly interconnected solution for residential installations.

- Photoelectric Smoke Detection
- Rapid "rate-of-rise" temperature detection
- Fixed temperature(135° F) heat detection
- 3V CR123A lithium batteries (2)
- Size: 5.6"W x 2.4"H

Sound All™ Heat Detector



ELK-6053

In the event of a fire alarm, the built-in sounders of all enrolled smoke detectors are activated, providing a wirelessly interconnected solution for residential installations.

- Rapid "rate-of-rise" temperature detection
- Fixed temperature(135° F) heat detection
- 3V CR123A lithium batteries (2)
- Size: 5.6"W x 2.4"H



Solutions for Serious Security & Automation Professionals

www.elkproducts.com | (800) 797-9355



ELK-6010

4-Button Keyfob With Replaceable Battery

Features a bi-color LED feedback indicator and allows users to arm, disarm, check status, and trigger a panic alarm.

- Status inquiry button & LED indicator provides arm, disarm, and alarm memory status
- Replaceable 3V CR2032 lithium battery
- Size: 1.5"W x 2.32"L x .5"D

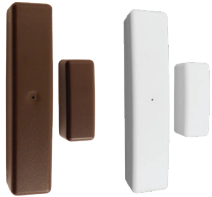


ELK-6011

Panic Button With Replaceable Battery

Ideal for activating a panic/emergency alarm. Features a single press and hold button plus a red LED feedback indicator.

- Water resistant lanyard included
- Replaceable 3V CR2032 lithium battery
- Size: 1.5"W x 2.32"L x .5"D



**ELK-6020 (White)
ELK-6020BR (Brown)**

Slim Line Door/Window Sensor

Ideal for narrow door and window jambs.

- One built-in reed switch
- Front and back tamper option
- Maximum operating gap of reed: 1/2"
- 3.6V ER14250 lithium battery
- Size: .71"W x 3.4"L x .8"D
- Magnet: .57"W x 1.5"L x .6"D
- Extra Magnets (10 pk): ELK-SM20 (White), ELK-SM20BR (Brown)



**ELK-6021 (White)
ELK-6021BR (Brown)**

Mini Window Sensor

Exceptionally thin, perfect for double hung and casement style wood/vinyl windows.

- One built-in reed switch
- Maximum operating gap of reed: 3/8"
- 3V CR2032 lithium battery
- Size: 1.1"W x 2.3"L x .25"D
- Magnet: .37"W x 2.3"L x .25"D
- Extra Magnets (10 pk): ELK-SM21(White), ELK-SM21BR (Brown)



ELK-6022

Universal 3-Zone Sensor

Secure up to 3 doors, windows, etc. with one built-in reed switch plus two external closed circuit inputs

- One built-in reed switch
- Two zone inputs for external wired contacts
- Front and back tamper option
- Maximum operating gap of reed: 1/2"
- 3V CR123A lithium battery
- Size: 1.5"W x 3"L x .9"D Magnet: .6"W x 1.5"L x .6"D
- Extra Magnets (10 pk): ELK-SM20



**ELK-6023 (White)
ELK-6023BR (Brown)**

Recessed Door Contact

Designed for wood or vinyl doors, becomes nearly invisible once the door is closed.

- Tamper: Microswitch detects removal of cover
- Maximum Operating Gap of Reed: 3/4"
- 3.6V 1/2 AA size lithium battery
- Size: 0.75"D x 2.5"L Mag: 0.75"D x .625"L
- Extra magnets (10 pk): ELK-SM23 (White), ELK-SM23BR (Brown)



**ELK-6030
ELK-6030P
(Pet Immunity)**

PIR Motion Sensor

Features a bright white LED that activates during alarm and is also programmable through rules.

- Ease of installation with keypad initiated walk test
- Industry First Security/Convenience Light
- Adjustable sleep mode durations and pulse count
- 3V CR123A lithium batteries (2)
- Size: 2.8"W x 4.4"H x 1.9"D



ELK-6040

Glass Break Sensor

Listens for actual patterns of breaking glass across the full audio band using Pattern Recognition Technology™.

- Omni-directional microphone, 360° detection
- Detection range: 20 ft. (6m) x 360°
- Min. distance from glass: 4 ft. (1.2m)
- 3V CR123A lithium battery
- Size: 4.25"W x 3.13"H x 1.70"D



ELK-AERF9

Two-Way Transceiver for E27

Allows an E27 Alarm Engine to accept Elk's complete line of two-way wireless sensors.

- Allows up to 128 wireless zones (sensors)
- Connects to dedicated connector on E27 main board or to the E27 data bus using the AEXRFA RF Bus Adapter.
- Up to 5 transceivers may be connected to a single control for greater coverage



ELK-M1XRFTWM

Two-Way Transceiver for M1

Allows an M1 Gold or M1E28 control to accept Elk's complete line of two-way wireless sensors.

- Allows up to 144 wireless zones (sensors)
- Operates from the M1 4 wire RS-485 Data Bus
- Up to 4 transceivers may be connected to a single control for greater coverage

